

# Implementing Hatchery Reform in the State of Idaho

Paul Kline  
Idaho Department of Fish and Game

Washington/British Columbia Chapter Meeting  
American Fisheries Society  
March 20, 2018



# Idaho's Hatchery Programs

- Idaho anadromous hatcheries are operated by the State, the Nez Perce Tribe, the USFWS and soon - the SBT
- Funding is provided by BPA, USFWS, and the Idaho Power Company
- Mitigation for hydropower dam construction and operation
- Primary purpose - to produce fish for Tribal and non-tribal harvest



# Idaho's Hatchery Programs

- Idaho hatchery production approximately:
- 14 M Sp/su Chinook Salmon
- 5 M Fall Chinook Salmon
- 8 M Summer Steelhead
- 1.5 M Coho Salmon
- 1 M Sockeye Salmon
- TOTAL: 29.5 M

13 hatcheries  
plus satellites



# Idaho's Hatchery Programs

- Putting release numbers in perspective for sp/su Chinook Salmon and Summer Steelhead:
  - Snake River hatcheries produce 34% of all sp/su Chinook Salmon produced in Columbia River drainage and...
  - 61% of all Summer Steelhead produced in Columbia River drainage



# Columbia Basin Hatchery Reform

1990

1994

1998

2000

2003

2003

2003

2005

2008

2009

F

I

J

K

L

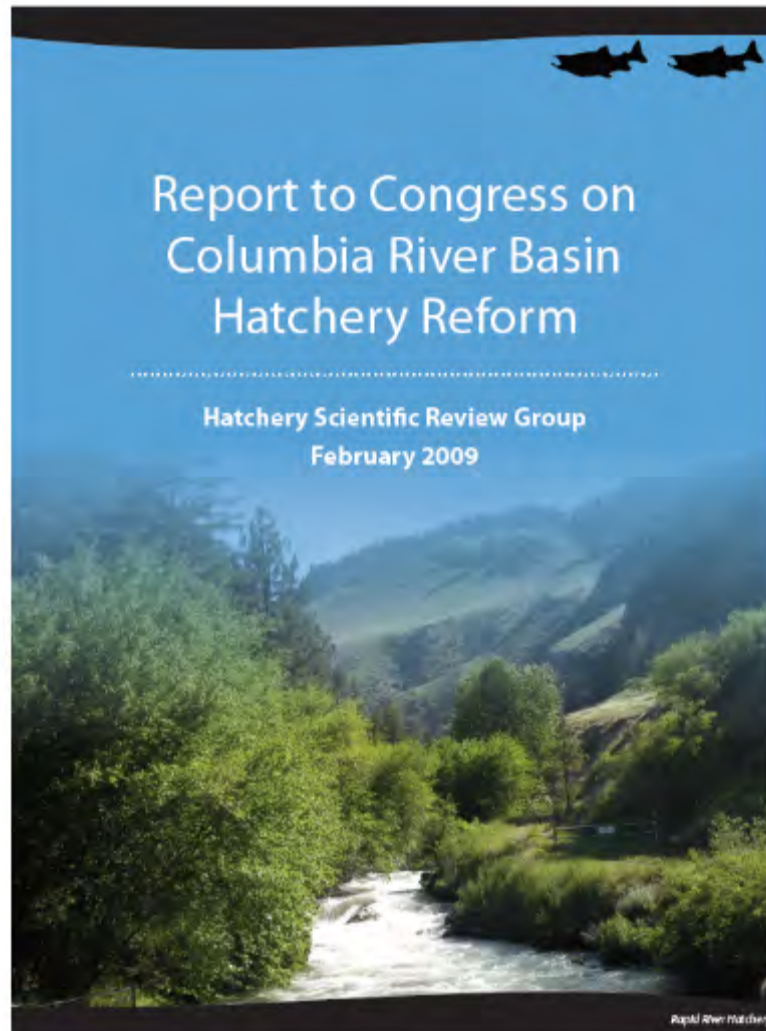
M

N

O

P

Q



tation

RME

Vork

v (HSRG)



# Columbia Basin Hatchery Reform

- The HSRG recommended that managers:
  - Develop clear hatchery program goals for conservation and harvest
  - Design and operate hatcheries in a scientifically defensible manner
  - Monitor, evaluate, and adaptively manage hatchery programs



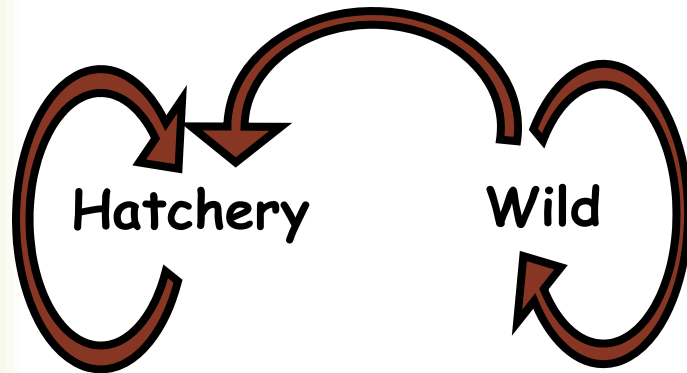
# Columbia Basin Hatchery Reform

- The HSRG:
  - Reviewed natural populations status
  - And situations where hatchery programs operated in or adjacent to natural populations....
  - Provided recommendations to meet conservation and harvest goals
  - Also recognized the importance of wild fish management zones



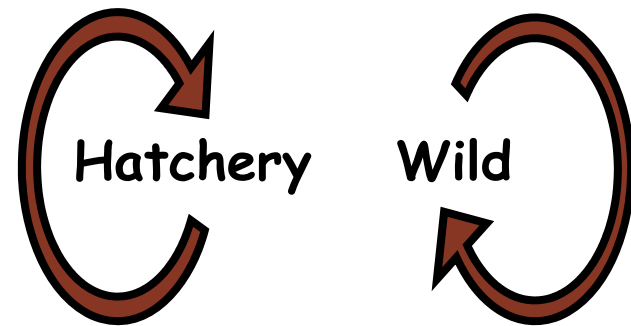
# Columbia Basin Hatchery Reform

*Integrated Goal:  
1 population,  
2 environments*



*Integrated*

*Segregated Goal:  
2 populations,  
2 environments*



*Segregated*

NOR

HOR

pHOS

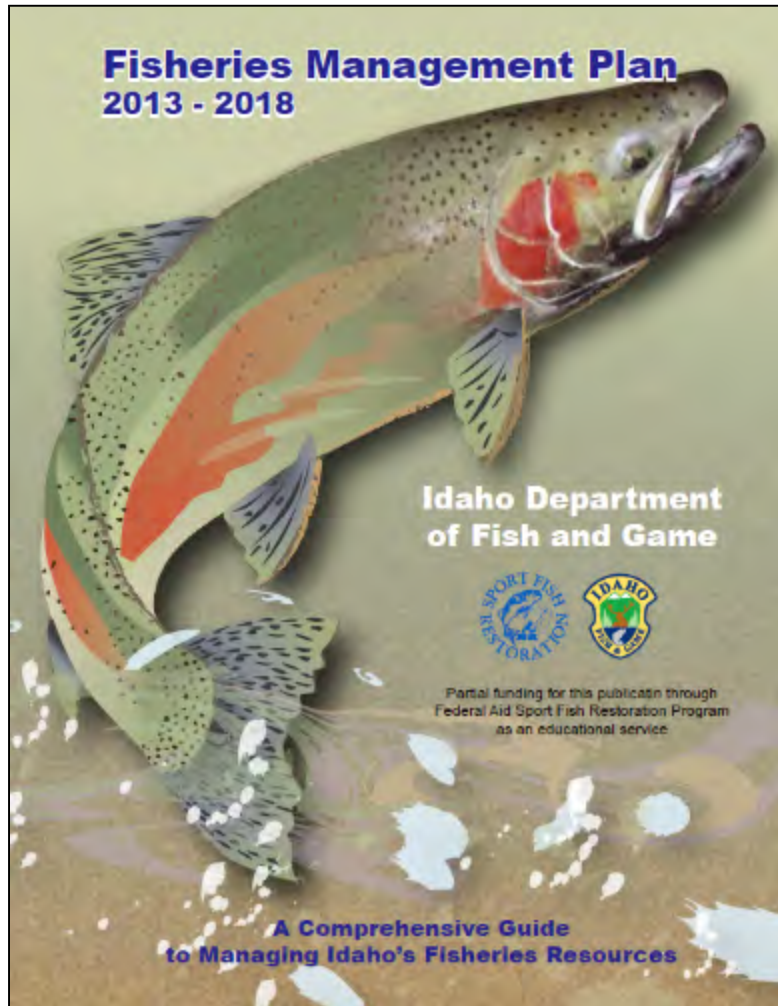
pNOB

PNI





# State Policy Guidance



## HATCHERY AND GENETIC MANAGEMENT PLAN (HGMP)

Hatchery Program:	South Fork Salmon River Summer Chinook
Species or Hatchery Stock:	Summer Chinook salmon ( <i>Oncorhynchus tshawytscha</i> ) South Fork stock
Agency/Operator:	Idaho Department of Fish and Game
Watershed and Region:	South Fork Salmon River, Idaho
Date Submitted:	December 21, 2011; Re-submitted October 28, 2016
Date Last Updated:	October, 2016



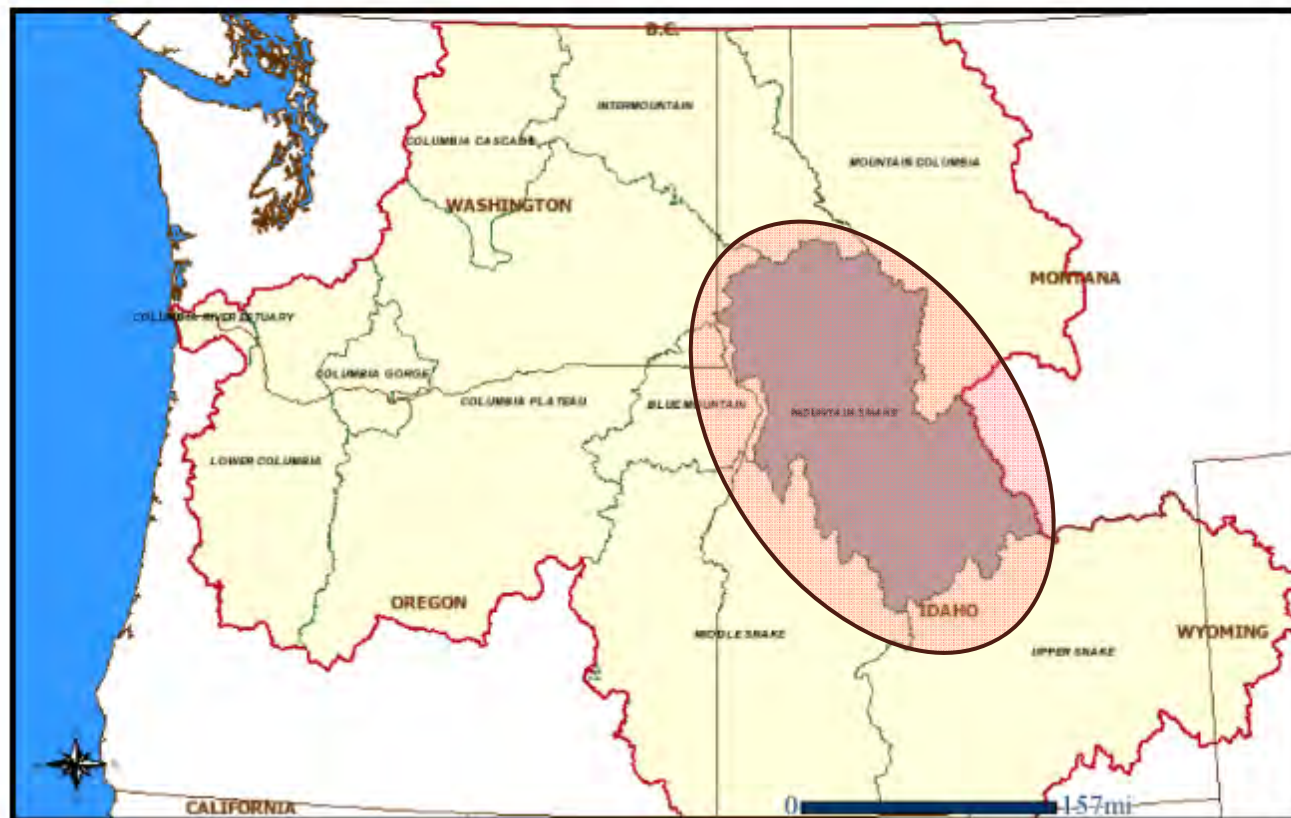
# State Policy Guidance

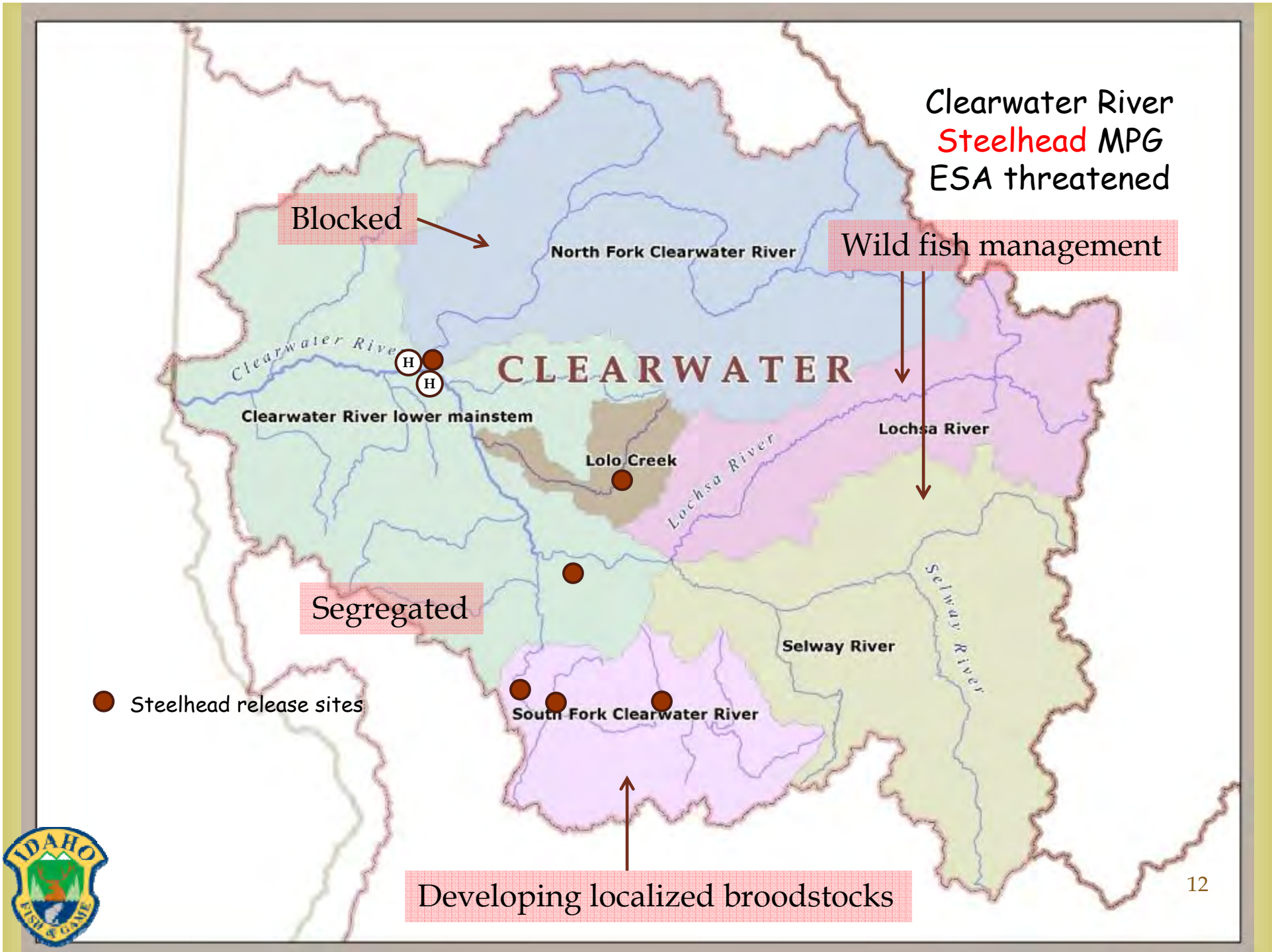
- Fish Management plan - Commission-approved policy
- “The Department will emphasize maintaining remaining populations of wild, native stocks of salmon and steelhead where they occur in sustainable habitat”
- “Hatcheries produce fish primarily for harvest but can be used to address supplementation as well as gene rescue/conservation goals”



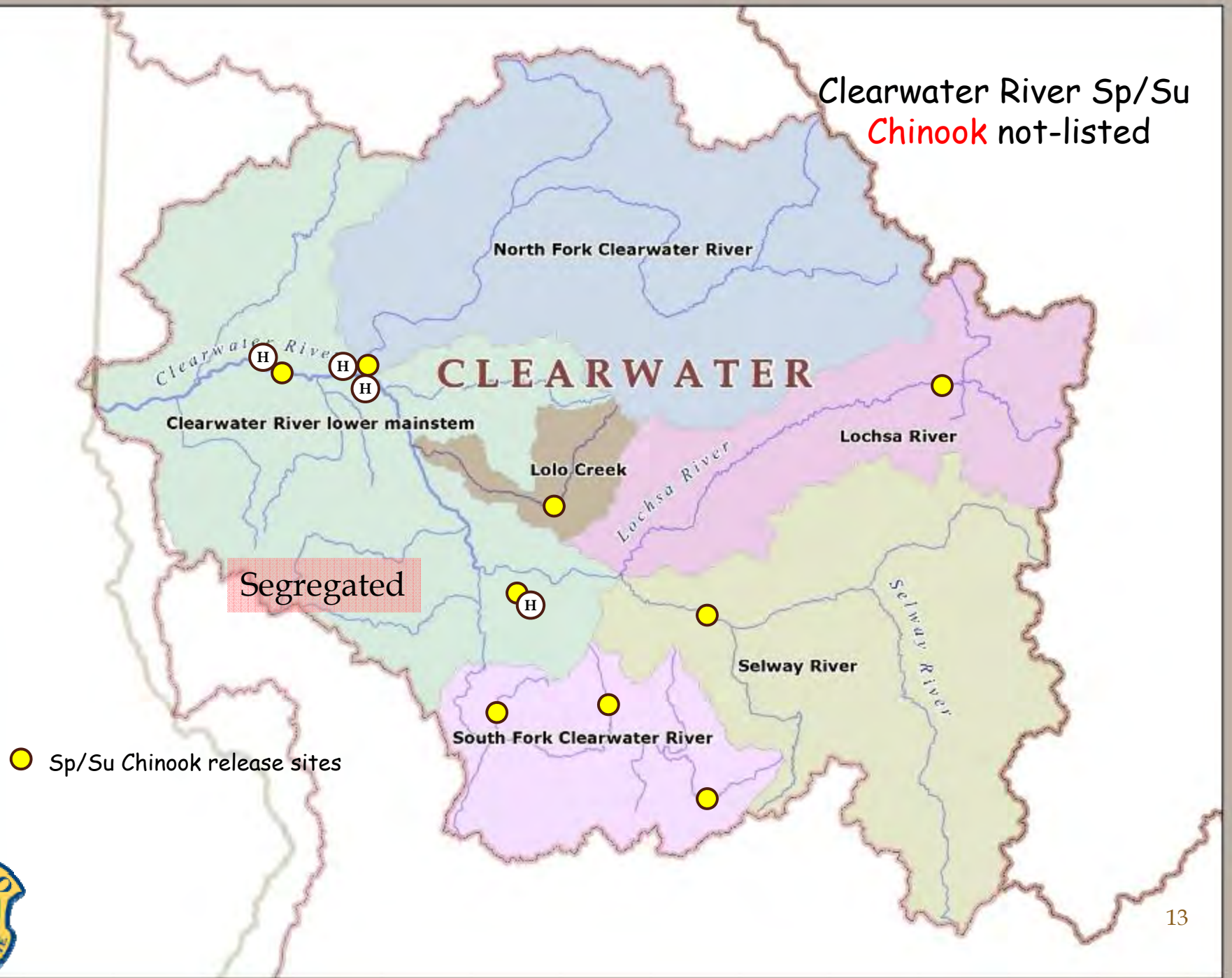
# Implementing Hatchery Reform

## Columbia River Basin, Mountain Snake Province *Salmon and Clearwater River Watersheds*





Clearwater River Sp/Su  
**Chinook** not-listed



Salmon River **Steelhead**  
MPG  
ESA Threatened

Wild fish management

Segregated

Localized Brood

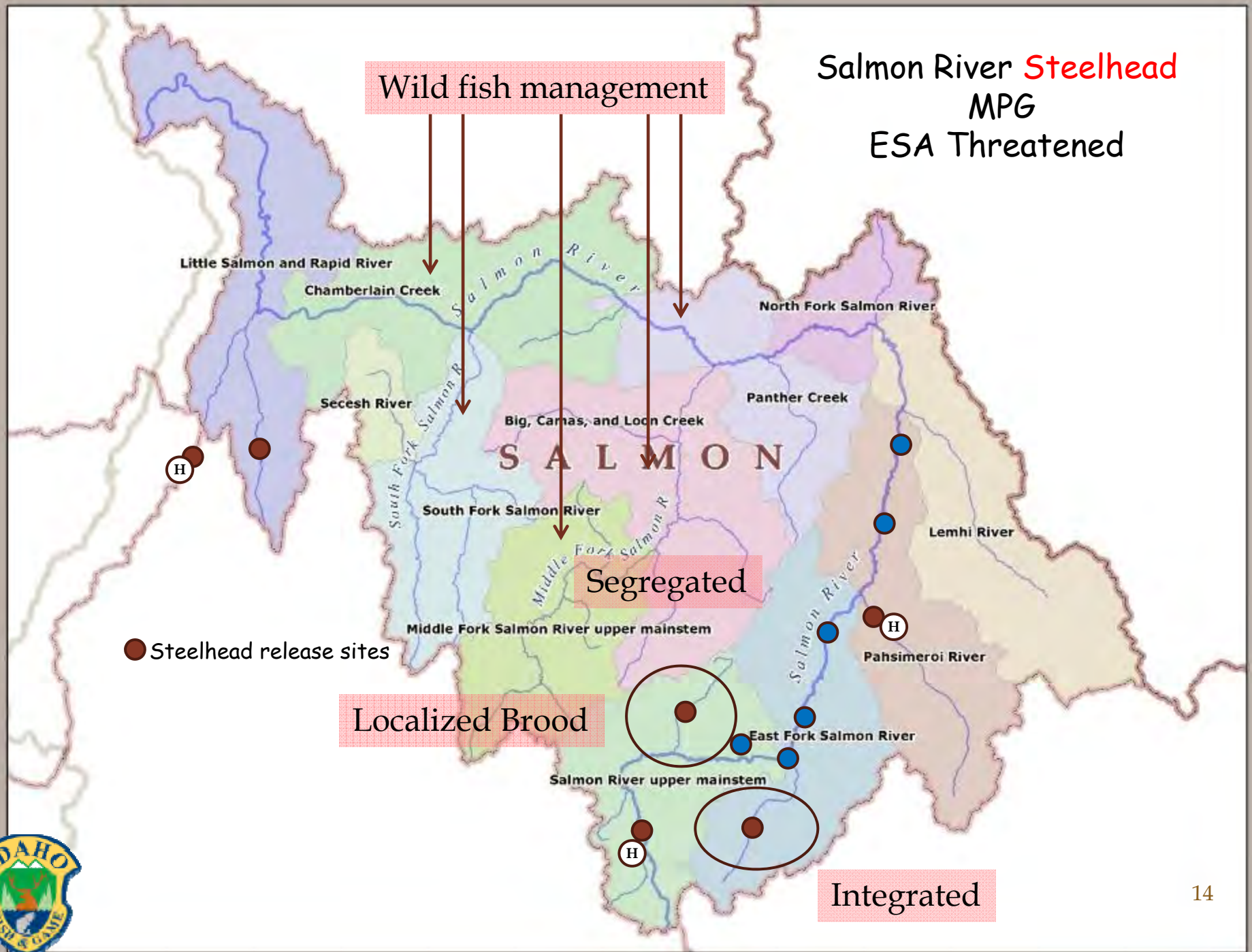
Integrated

● Steelhead release sites

H

H

H

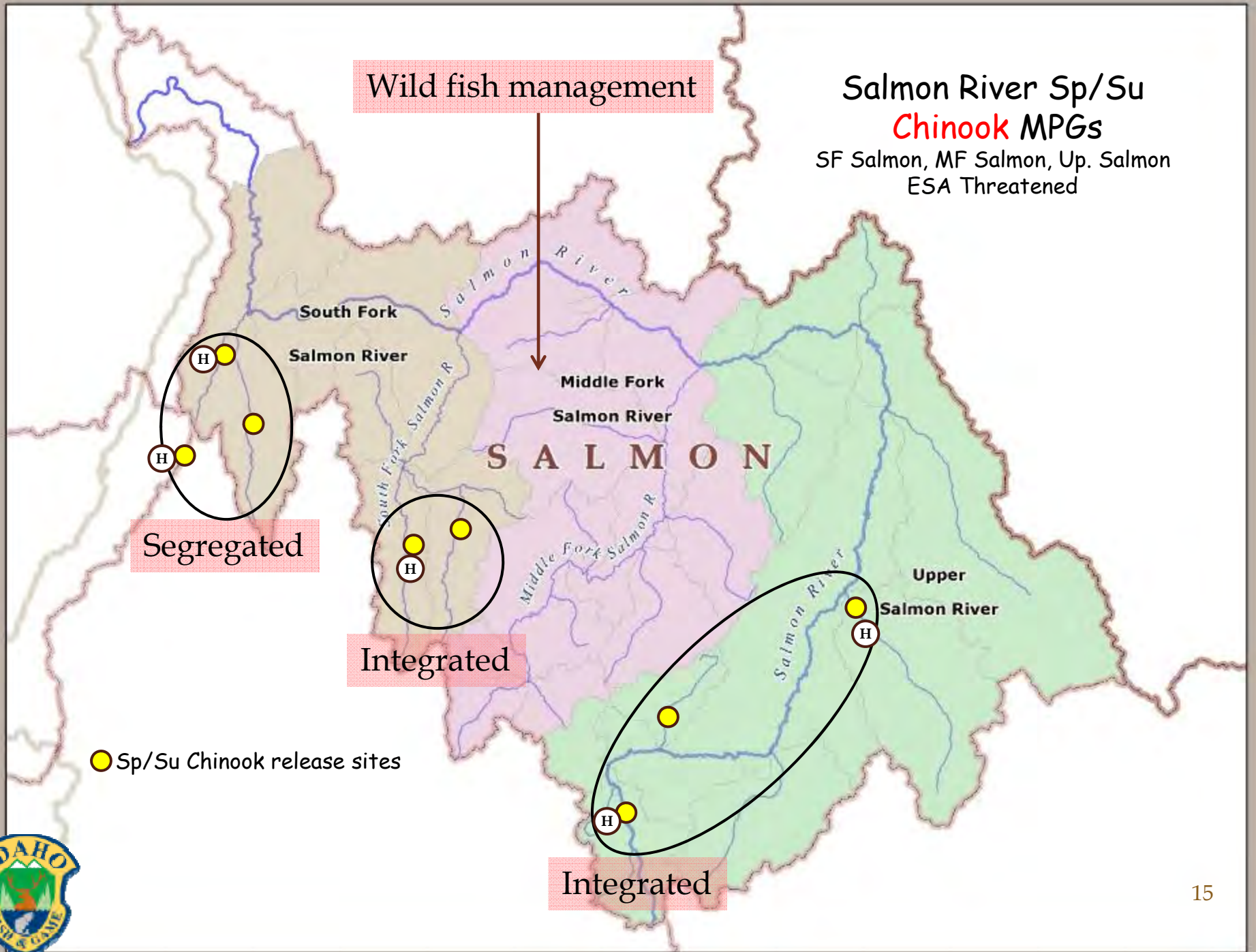


Wild fish management

Salmon River Sp/Su

**Chinook** MPGs

SF Salmon, MF Salmon, Up. Salmon  
ESA Threatened



Segregated

Integrated

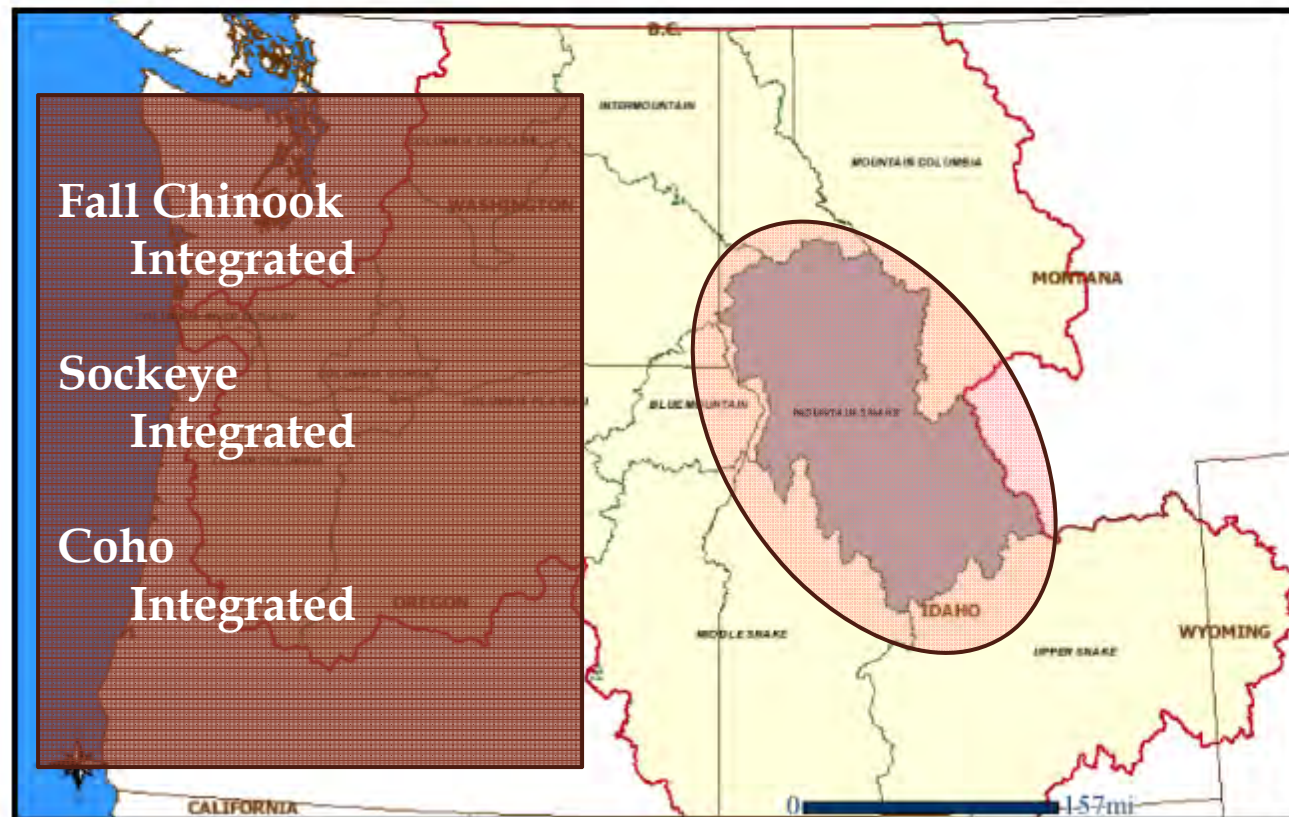
Integrated

● Sp/Su Chinook release sites



# Implementing Hatchery Reform

**Columbia River Basin, Mountain Snake Province**  
*Salmon and Clearwater River Watersheds*





# Implementing Hatchery Reform

- Applying HSRG principles:
- Integration = "stepping stone" programs
- Most programs NOR limited
- "Sliding scale" frameworks used
- Using PBT to evaluate RRS



# Summary

- In summary, the state is implementing hatchery reform (consistent with HSRG recommendations) as part of its salmon and steelhead mitigation program.
- The state supports the importance of maintaining wild fish management zones but also supports using hatcheries to augment natural production where appropriate.
- The state places high importance on ensuring that mitigation promises are met and that hatchery fish continue to be produced to meet harvest objectives.



Time for questions?

