



StreamNet

Steering Committee Meeting March 4-5, 2026

Pacific States Marine Fisheries Commission
6720 S Macadam Ave Suite 200
Portland, OR 97219

Microsoft Teams [Need help?](#)

[Join the meeting now](#)

Meeting ID: 211 040 821 682 3

Passcode: p6Gj3HA7

Dial in by phone

[+1 207-387-0436,,393723874#](#) United States, Portland

[Find a local number](#)

Phone conference ID: 393 723 874#



Welcome and Introductions

Please use the chat to introduce yourself (name and affiliation)

Please leave web cameras on to facilitate discussion

Please mute yourself when not speaking.

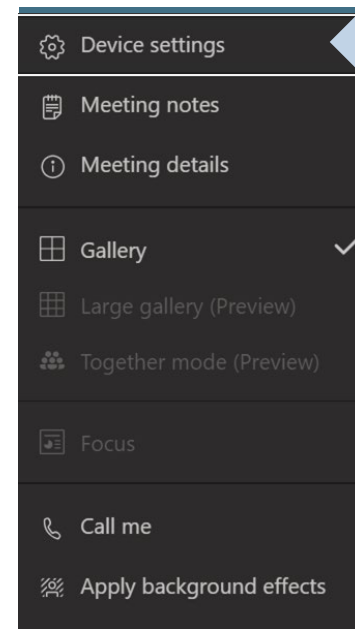
Use *6 to mute phone audio.

Use the microphone icon on the control bar to mute computer audio.



Check device settings

if you are having problems with audio/video



Be Respectful

Be Accountable

Communicate Effectively

Value Differences

Collaborate



Agenda

(times are approximate, PACIFIC TIME ZONE)

DAY 1 - March 4, 2026	
TIME (Approximate)	AGENDA ITEM
1:00 PM PT (2:00 PM MT)	Welcome (Meg Dethloff and Nancy Leonard)
1:15	Spotlight: Columbia Basin Fish and Wildlife Library Update (Tami Wilkerson)
1:35	PNAMP Fish Monitoring Work Group Updates (Meg, Sam Cimino, Mari Williams)
2:15	Break
2:30	PNAMP Monitoring Resources Update (Sam)
2:45	Progress Update StreamNet Tech Team/DDT Teams (Sam)
3:05	Upcoming Conferences (Kasey Bliesner, Meg, Sam)
3:30	Wrap-up and tomorrow's agenda (Nancy)
3:35 PM	Adjourn

DAY 2 - March 5, 2026	
TIME (Approximate)	AGENDA ITEM
9:00 am PT (10:00 AM MT)	Welcome and introductions (Meg Dethloff and Nancy Leonard)
9:10	Spotlight: Montana's Fish Distribution Redevelopment (Dawn Anderson)
9:55	GIS Update (Van Hare)
10:25	Break
10:50	StreamNet Annual Report to BPA (Mari Williams)
11:20	Upcoming Development: eDNA presence/absence, PBT (Lara, Nancy)
11:30	Lunch
1:00 PM	Welcome back (Nancy)
1:05	QA/QC tool 2025 Summary & Discussion (Greg Wilke)
1:35	CAP Strategic Plan implementation and Progress (Mari, Nancy)
2:05	Break
2:20	StreamNet Member Updates (ALL)
3:20	Wrap-up and Next Steps (Meg)
3:30 PM	Adjourn

UPDATE



Columbia Basin Fish and Wildlife Library Update

Tami Wilkerson, Librarian/Library Program Lead



Columbia Basin Fish and Wildlife Library Updates

STREAMNET STEERING COMMITTEE

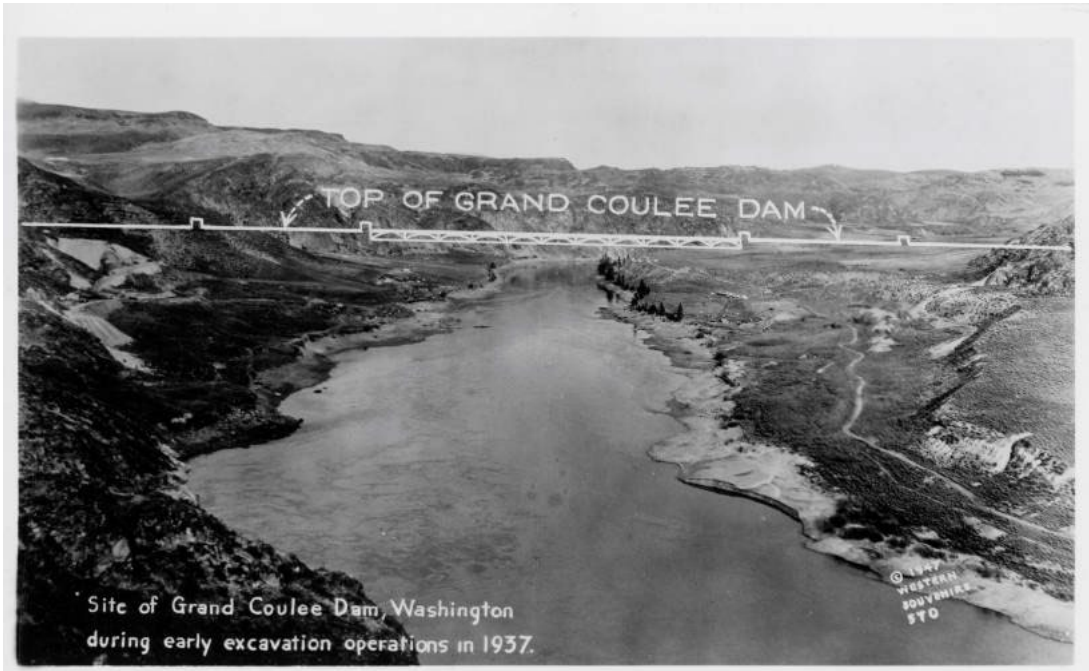
MARCH 4, 2026

Background



- Brief History
 - Established 1995
- Library Collection
 - 20,000+ print documents, 20,000+ digital documents
 - Focus on 'grey' literature
- Services
 - Access to materials
 - Interlibrary Loan
 - Literature searches

Digital Collections



- [CRITFC slides, photographs, and negatives](#)
- [Pacific Lamprey collection](#)
- [CRITFC newsletters](#)
- [Video transcription](#)

Other Projects



- [Bibliographies](#)

- All updated and annotated

- [Website](#) revamp

- Literature review and synthesis

- Piscivory on Pacific salmonids

Contact Us

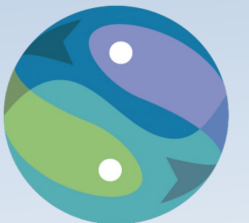


- Website and catalog: www.cbowl.org
- [Contact Us Form](#)
- Email: librarystaff@critfc.org
- Call: 503-736-3581



PNAMP Fish Monitoring Work Group Updates

Meg Dethloff, Sam Cimino, Mari Williams





Update Terms and Definitions Used in CAP Data Exchange Standards

The Terms and Definitions Task Group completed a region-wide review of CAP DES terminology.

- Natural and Hatchery DESs contain 665+ fields, many with inconsistent definitions across tables.
- The group agreed to adopt a one-term–one-definition controlled vocabulary.
- The review identified errors and recommended 159 updates across DES tables.
- These changes improve consistency and support standardized data exchange across the region.

Summary now available: [Coordinated Assessments Partnership Terms and Definitions Review 2024-25](#)

Task Leads:

Mari Williams (PSMFC)
mwilliams@psmfc.org

Jen Bayer (PNAMP)
jen.pnamp@gmail.com

Mike Banach (PSMFC)
mbanach@psmfc.org





Carrying Capacity Standards

Review of carrying capacity estimation methods, including: Habitat expansion, stock-recruit models, quantile regression, Individual based models, and food web modeling.

Authors: Morgan H. Bond, Timothy Copeland, Tim Beechie, Sean M. Naman, Joe R. Benjamin, J. Ryan Bellmore, Kevin E. See, Correigh Greene, Jennifer M. Bayer, Megan Dethloff, and Russell Scranton

Progress:

- Final edits, USGS peer review in process

Next Steps:

- Submission to journal
 - Fish Biology and Fisheries
 - Ecology of Freshwater Fishes

Task Leads:

Morgan Bond (NOAA)
morgan.bond@noaa.gov

Tim Copeland (IDFG)
tim.copeland@idfg.idaho.gov

Russell Scranton (BPA)
rwscranton@bpa.gov

Jen Bayer (PSMFC Contractor)
jen.pnamp@gmail.com

Meg Dethloff (PSMFC)
mdethloff@psmfc.org



PIT Tag Data and Related Analyses

Purpose: This task is focused on documenting and recommending improvements to data management, analytical methods, and tools for PIT tag data.

Progress:

- “One-Stop Shop” for PIT tag data and analysis resources

Next Steps:

- Future: Determining how to coordinate an in-person workshop (focused on analysis) or another webinar-based series (with topics about emerging PIT tag technology, modeling, setting up and managing sites)



Task Leads:

Marika Dobos (IDFG)
marika.dobos@idfg.idaho.gov

Russell Scranton (BPA)
rwscranton@bpa.gov

Megan Dethloff (PSMFC)
mdethloff@psmfc.org



Focal Species Draft Polygon Maps

Purpose: Develop focal species polygon maps (HUC 12 scale) for use by BPA CBFISH, Monitoring Resources, and other regional partners that build upon StreamNet-PSMFC Fish Distribution layers.

Layers to Display:

- Distribution - (extant, extirpated, extinct, or as relevant)
- Stream habitat use - (migratory, rearing, spawning (if not possible designate as present/absent))
- Layers for stock grouping from NOAA MAFAC Columbia Basin Task Force Partnership - Phase 2 report

Task Leads:

Meg Dethloff (PSMFC)
mdethloff@psmfc.org

Van Hare (PSMFC)
vhare@psmfc.org

Jordan Miller (PSMFC)
jmiller@psmfc.org

Process

- Locate existing layers and information, **working with StreamNet partners** and PSMFC GIS team
- **Draft** polygon layers and fully document sources
- Share **draft** polygons and information sources with **StreamNet partners** for review
- Work with PNAMP FMWG to get expert review of the **draft** polygon layers
- Package layers and make available for use by BPA CBFish and MonitoringResources.org

Future - As StreamNet partners become able to provide additional layers using PSMFC Fish Distribution Mapper, the polygons will be updated with their layers



Juvenile Fish Trap (JFT) Data Discovery Tool

Purpose: This task's origination came out of a need to have one consolidated product that allows fisheries managers and biologists to quickly, and visually (geospatially), inventory the Columbia River Basin's (CRB) rotary screw trapping efforts.

Progress: Fisheries manager's appetite for the provided information and ease of which to access the information quickly expanded this tool beyond focusing solely on rotary screw traps and to include other juvenile fish trapping efforts outside of the CRB.

Task Leads:

Sam Cimino (PSMFC)
scimino@psmfc.org

Meg Dethloff (PSMFC)
mdethloff@psmfc.org

Juvenile Fish Trap Data Discovery Tool

- Fish monitoring work group met 12/18/25
 - 18 attendees from around the CR Basin and new interest from the Puget Sound and the Oregon Coast
- Formerly the Rotary Screw Trap Data Discovery Tool
 - Formerly the Rotary Screw Trap Dashboard
 - Any trap handling of downstream juveniles with some determined minimum amount of data generated (RSTs, inclined plane traps, scoop traps, weirs)

- Provide linkages to the Columbia Basin Fish Facilities Layer and PTAGIS
- Draft – A statement of what is being provided with this tool
- Next Steps
 - Meet with FMWG again
 - Regular meetings with the developers (QW)
 - Start Production in May
 - Final product mid/late- Summer

The screenshot displays the 'Juvenile Fish Trap Data Discovery' web application. At the top, there is a navigation bar with the 'StreamNet' logo, the title 'Juvenile Fish Trap Data Discovery', and links for 'JFT HOME' and 'LOGIN'. Below the navigation bar is an 'Advanced Search' section with a search input field, a 'GO' button, and a 'Clear' button. A breadcrumb trail shows 'Home > Advanced Search'. Below the search bar, it indicates 'All (163)' results. A 'Filters' section on the left allows users to refine results by 'Operating Organization' and 'Species'. Under 'Operating Organization', there are radio buttons for 'Coeur d'Alene Tribe (2)', 'Colville Confederated Tribes (3)', and 'Confederated Tribes of Warm Springs (11)', with a 'Show 10 more' link. Under 'Species', there is a radio button for 'Chinook (58)'. To the right of the filters is a map showing a geographical area with several data points marked by yellow and blue dots. A 'Sort by: Title' dropdown menu is visible above the map. The StreamNet logo includes the tagline 'Fish Data for the Northwest'.



SAR – SAS Data in the CAX

Purpose: Review CA SAR Data Exchange Standard fields and submitted data to identify and distinguish between Smolt to Adult Return data and Smolt to Adult Survival data in the CAX.

The group will review terms, definitions, and existing data to determine how best to differentiate between data that is SAR and data that is SAS.

Justification:

- In response to the [ISAB's April 2025 report](#), a task group will convene to review and modify the data exchange standards for SAR metrics in Coordinated Assessments

Task Outcomes: DES updates for NCA and HCA SAR fields

Task Application: Coordinated Assessments data exchange as applicable to determining SAR and SAS rates

[ISAB SAR and SAS Metrics Report](#)

Task Leads:

Mari Williams (PSMFC)
mwilliams@psmfc.org

Kasey Bliesner (ODFW)
Kasey.bliesner@odfw.Oregon.gov

Bekki Waskovich (IDFG)
Rebecca.Waskovich@idfg.Idaho.gov

Evan Brown (IDFG)
evan.brown@idfg.Idaho.gov



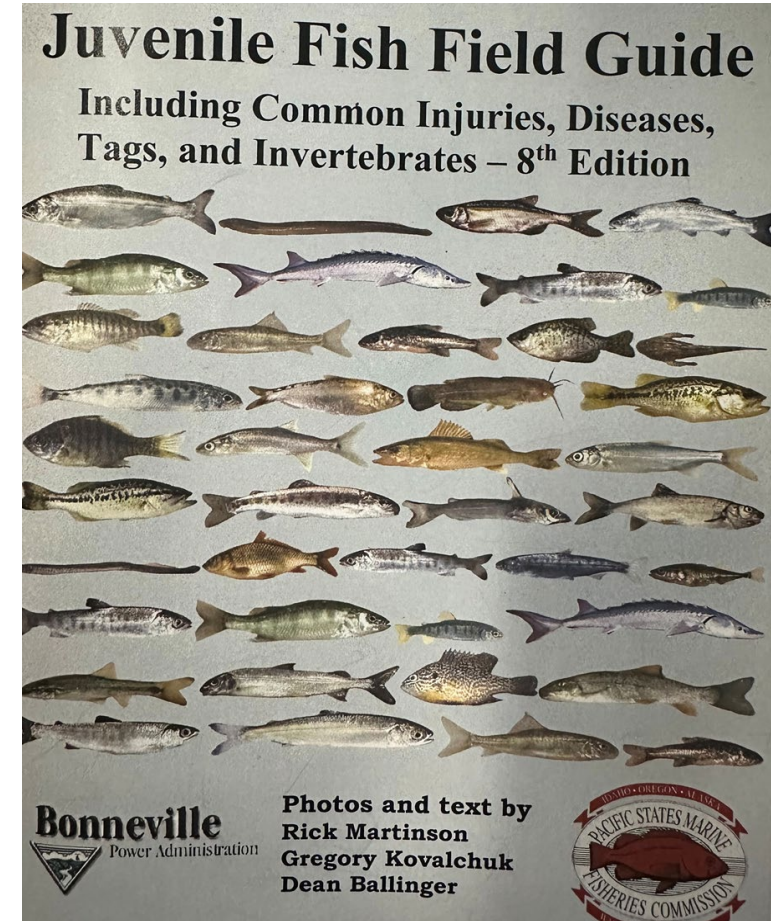
ISAB SAR and SAS Metrics Report

Break
Return @ 2:30



Monitoring Resources Update - Outreach

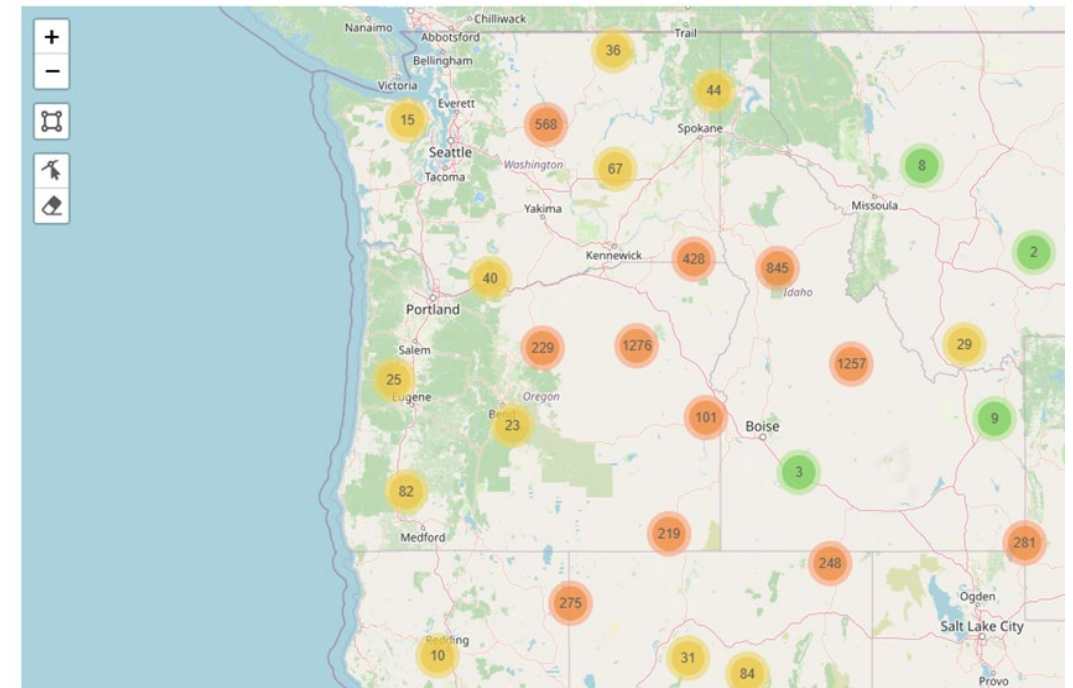
- Reaching out to project sponsors to help them complete documentation – Fulfill BPA requirements
 - PNAMP initiative – not a BPA request
 - Identified 48 projects that are either past their CBFish completion date or need to be completed in the next year
 - Have reached out to 12 of those projects so far
- Presenting at the PTAGIS SC in 2 weeks
 - Updating the Species Run and Rear (SRR) Type and Condition Codes
 - Species ID Guide to bring digitally into the field
 - Following up w/ previous image owners and getting new images submitted for approval
 - Collaboration between PSMFC, BPA, ODFW, CBFWL
 - Other partners encouraged to join
- Presenting at WD AFS
- Updating Guidance Documents/FAQ Page



Monitoring Resources Update - Development

- Recent Development
 - Ownership of content is now at the organization level
 - Changing from individual owners and collaborators to **organization ownership** and authors
 - Allows more flexibility to change editing permissions
- Upcoming Development
 - Add Columbia Basin Fish Facilities Layer to the Explorer Map
 - Also allow CBFFL sites to be selected in the Sample Designer
 - Focal species fish populations polygon layers to display on the Explorer Map
 - Connects to StreamNet and CBFish
 - Machine readable data sheets
 - Upload data sheets – MR populates metrics
 - Backend updates

Explore Monitoring Sites



StreamNet Tech Team/DDT Update

- StreamNet Tech Team and DES Development Teams Meeting
- January 13, 2026
 - 8 Different Federal, Tribal, and State agencies
 - 23 attendees





SN Tech Team

Current Members

- Sam Cimino (Coordinator, PSMFC)
- **vacant (Chair, partner)**
- Mike Banach (PSMFC)
- Mari Williams (PSMFC)
- Greg Wilke (PSMFC)
- Van Hare (PSMFC-GIS Center)
- Lily Cohn (PSMFC -GIS Center)
- Binh Quan (PSMFC Consultant)
- John Arterburn (Colville Tribes)
- George Batten (ESA, Colville Tribes)
- Tami Wilkerson (CRITFC, CBF&WL)
- Jiaming Yang (CRITFC)
- Evan Brown (IDFG)
- **Chris Harrington (IDFG)**
- Katie Walker (IDFG)
- Bekki Waskovich (IDFG)
- **Brittany Beebe (ODFW)**
- Kasey Bliesner (ODFW)
- Jake Chambers (ODFW)
- **Peter Robinson (ODFW)**
- David Quillin (ODFW)
- Dan Craver (USFWS)
- Todd Gilmore (USFWS)
- Michelle Groesbeck (WDFW)
- Phil Sandstrom (WDFW)
- Leslie Sikora (WDFW)
- Michelle Steg-Geltner (YN)
- Dawn Anderson (MFWP)
- Jennifer Graham (CTWSBNR)
- Brad Houslet (CTWSBNR)
- Rebecca Croy (SBT)
- Kurt Tardy (SBT)
- Ryan Kinzer (NPT)
- Jason Vogel (NPT)
- Colette Coiner (CTUIR)
- Stacy Schumacher (CTUIR)

SN DDT

Current Members

- Sam Cimino (Coordinator, PSMFC)
- **vacant (chair, partner)**
- Mike Banach (PSMFC)
- Mari Williams (PSMFC)
- Megan Griffiths (PSMFC)
- Greg Wilke (PSMFC)
- Van Hare (PSMFC-GIS Center)
- Lily Cohn (PSMFC-GIS Center)
- John Arterburn (Colville Tribes)
- George Batten (ESA, Colville Tribes)
- Jiaming Yang (CRITFC)
- Evan Brown (IDFG)
- **Chris Harrington (IDFG)**
- Katie Walker (IDFG)
- Bekki Waskovich (IDFG)
- Kasey Bliesner (ODFW)
- Jake Chambers (ODFW)
- David Quillin (ODFW)
- **Peter Robinson (ODFW)**
- Todd Gilmore (USFWS)
- Michelle Groesbeck (WDFW)
- Leslie Sikora (WDFW)
- Michelle Brunström-Steg (YN)
- Dawn Anderson (MFWP)

CAP (natural and hatchery) DDT

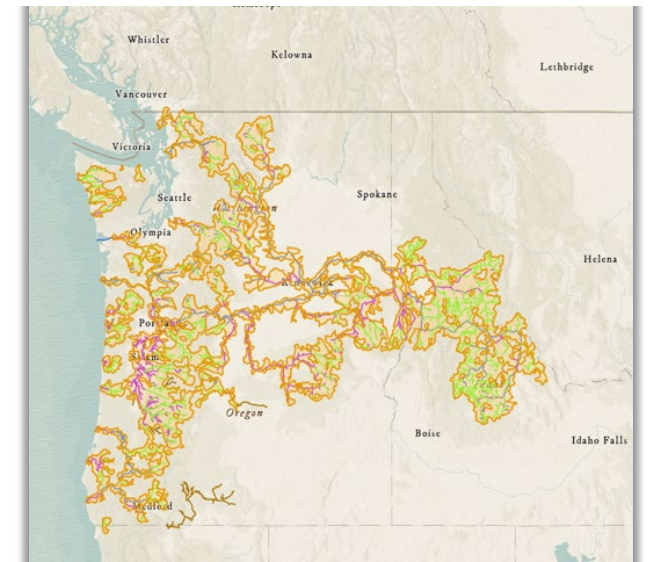
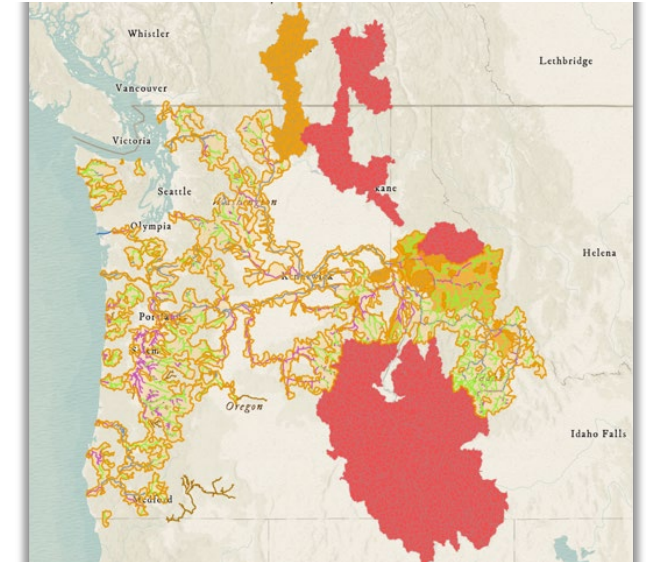
Current Members

- Sam Cimino (Coordinator, PSMFC)
- **vacant (Chair, Partner)**
- Nancy Leonard (CAP Lead, PSMFC)
- Mike Banach (M, PSMFC)
- Mari Williams (M, PSMFC)
- Monica Diaz (O, PSMFC)
- Megan Griffiths (O, PSMFC)
- Russell Scranton (M, BPA)
- Brady Allen (M, BPA)
- George Batten (M, ESA, Colville Tribes)
- Jiaming Yang (M, CRITFC)
- Bekki Waskovich (M, IDFG)
- Katie Walker (M, IDFG)
- Evan Brown (O, IDFG)
- Jay Hesse (M, NPT)
- Ryan Kinzer (M, NPT)
- Kasey Bliesner (M, ODFW)
- Jake Chambers (M, ODFW)
- **Brittany Beebe (M, ODFW)**
- **Peter Robinson (O, ODFW)**
- Todd Gilmore (M, USFWS)
- Thomas Buehrens (M, WDFW)
- Brodie Cox (M, WDFW)
- Andrew Murdoch (M, WDFW)
- Phil Sandstrom (M, WDFW)
- Michelle Groesbeck (M, WDFW)
- Michelle Steg-Geltner (M, YNF)
- Katie Barnas (M, NOAA F/NWFSC)
- Jen Bayer (O, PNAMP)

Committee Members

StreamNet Tech Team/DDT Update

- Presentation from Van Hare (PSMFC-GIS)
 - Generalized Fish Distribution – significant updates due to dam removals
 - Re-publish water distribution – ensure consistent centerlines for reservoirs
 - Fish Monitoring Locations “Trends” – Pulse of new trends coming from ODFW
 - West Coast Fish Facilities – Update (Feb – Mar)
 - Fill in a number of missing features on the Oregon Coast
 - Fish Current Range and Extirpated Areas – FMWG Focal Species Polygons



StreamNet Tech Team/DDT Update

- CAP Online Query System Updates
 - Time Series IDs now fully populated across agencies
 - TimeSeriesID will drive Data Visualization Grouping
 - Adding TimeSeriesInfo Table to all data download options
 - Updating DES definitions to current terms and definitions and move explanatory text into codes & conventions
- QA/QC Tool Findings
 - Finished Rd 3 of the data input for the QAQC of high-level indicators
 - Moving on to Rd 4
- HOBA Proposal
- Discussion of BestValue field in Natural DES
 - Continue to defer to the provider to identify their best values
 - Data providers encouraged to include this field in their QA/QC of older records
- Age DES



StreamNet Tech Team/DDT Update

DES Revisions made ASAP

Updated in both Natural and Hatchery DES

- 1) Removed the underscore from the field name
 - ESU_DPS became ESUDPS
- 2) Standardized capitalization to the AFS format
 - Example: "Coho salmon" became "Coho Salmon"

RETICULATE SPIKEFISH

Hollardia hollardi

ATLANTIC EELPOUT

Lycodes terraenovae

HOGCHOKER

Trinectes maculatus

VACA VOLADORA

Prionotus stephensoni

CALIFORNIA LANTERNFISH

Symbolophorus lucifer

MIMIC CUSK-EEL

Ophidion imitator

SAND SHINER

Miniellus stramineus

CHEVALIER CUIVRÉ

Moxostoma hubbsi

SANTA CRUZ PUFFFISH

Cyprinodon arcuatus

TOTOABA

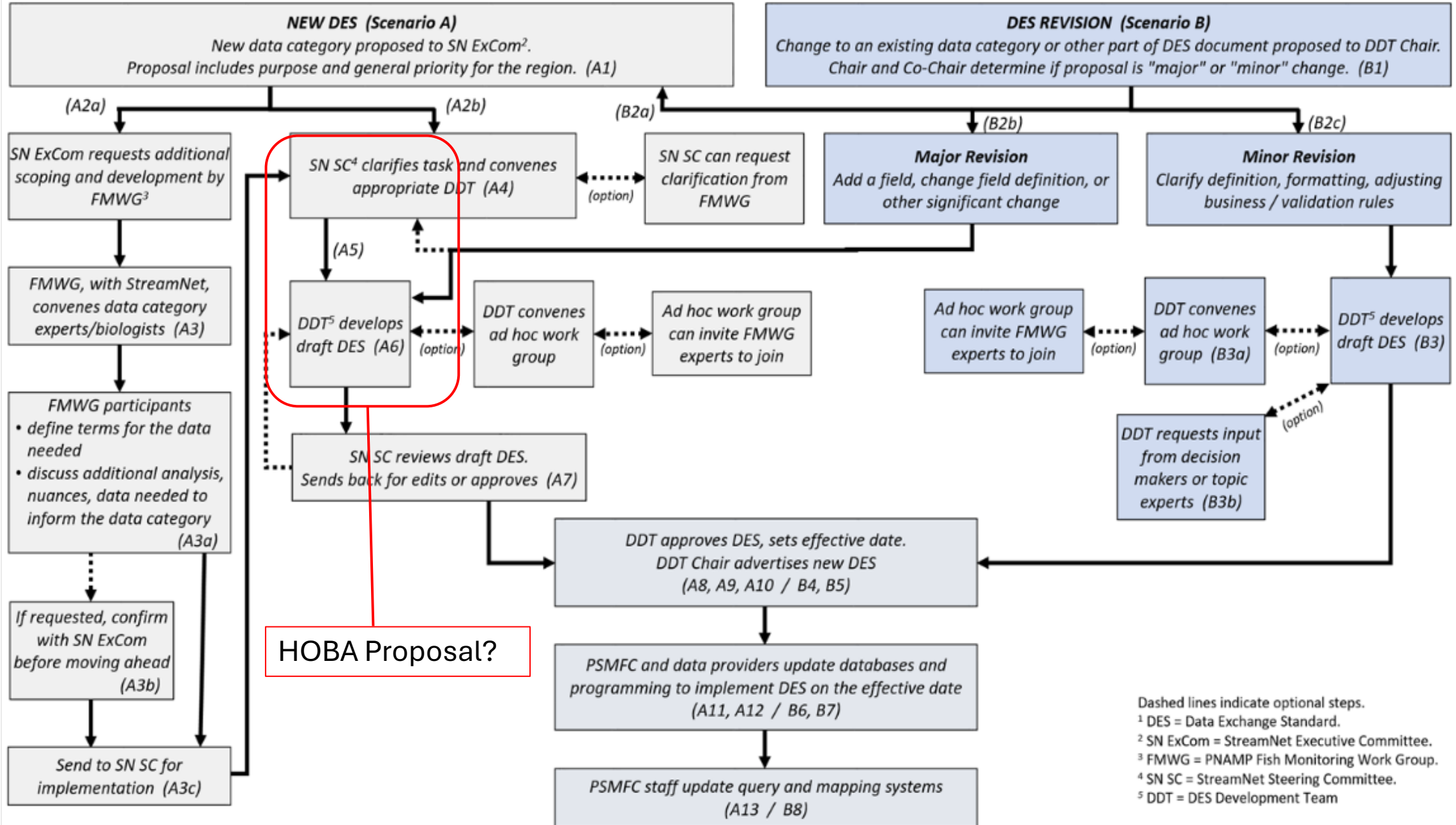
Totoaba macdonaldi

**Common and Scientific
Names of Fishes from
the United States,
Canada, and Mexico**

Eighth Edition

**American Fisheries Society
Special Publication 37**

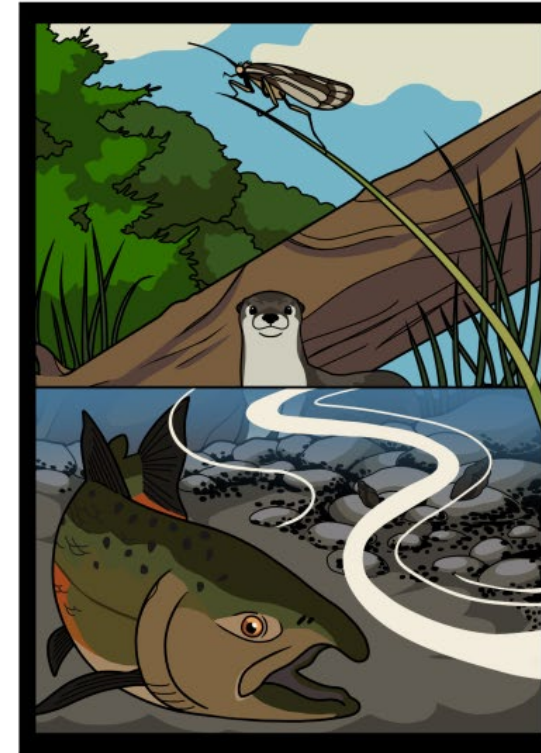
Processes for New DES¹, Major DES Revisions, and Minor DES Revisions



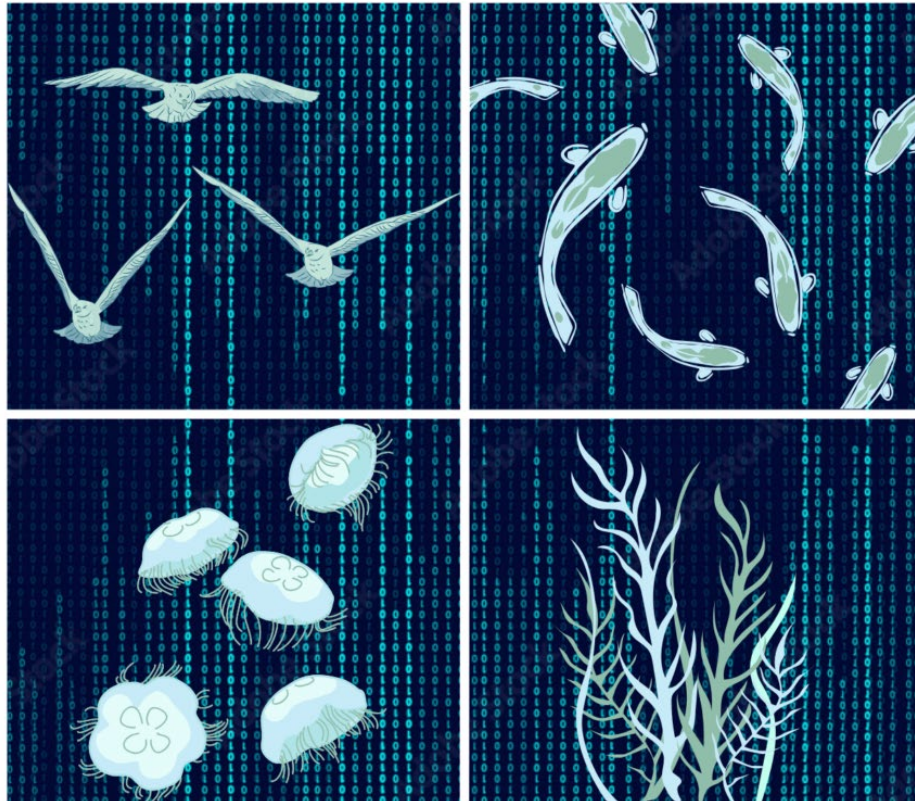
Upcoming Conferences



Western Division American Fisheries Society



The Power of Perspective
May 4-7th 2026, Portland OR



Emerging Technologies Information Sessions

October 26-28, 2026

Skamania Lodge - Stevenson, Washington

Effectiveness Monitoring Western Division AFS Symposium

- Presentations and panel discussion
- 25 years of effectiveness monitoring has yielded mixed results
- Hope to advance effectiveness monitoring by:
 - Fostering discussion on lessons learned
 - Explore innovative approaches and technologies
 - Identify ideas to be developed into actionable recommendations to guide restoration investments



Connecting Observations to Outcomes: Perspectives on Data Flow in Fisheries Science

Organizers:

Kasey Bliesner, ODFW

Mari Williams, PSMFC

Erik Suring, ODFW

Brittany Beebe, ODFW

Sheryn Olson, retired

Lara Erikson, PSMFC

Topics:

Field Collection

Data Analysis

Data Management – flow

Perspectives

Ecosystem Integration

Salmon Data Mobilization

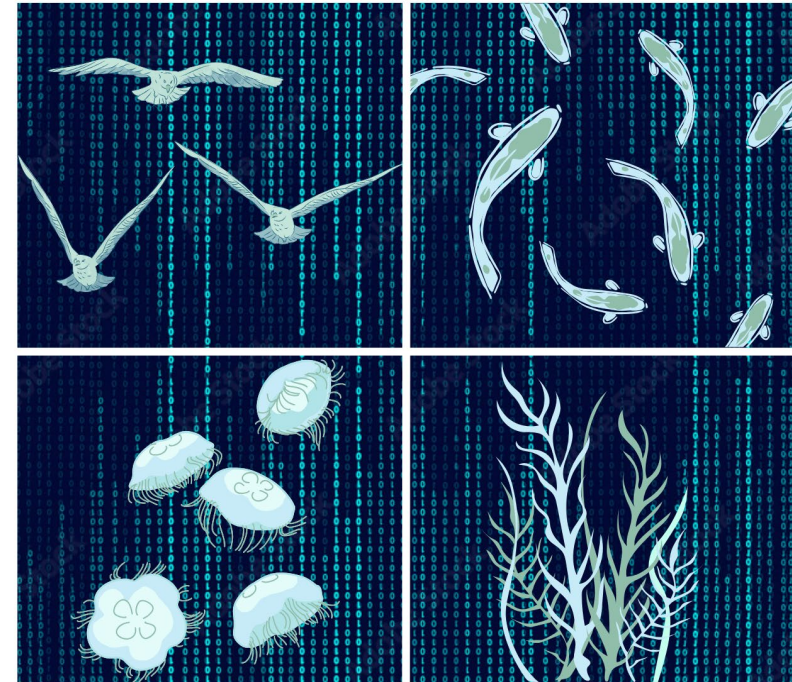
Presenters:

- All the cool kids



Emerging Technologies Information Sessions (ETIS)

- October 26-28, 2026 – Skamania Lodge in Stevenson, Washington
- Sent out a survey of interest in December
 - 49 responses
 - ID'd topics, themes, interest in attending in-person
- Outreach
 - Announcement “Save the Date” - February PNAMP Newsletter
 - Invitation – March PNAMP Newsletter and past participants
 - Invited Sponsors and Exhibitors
- Call for Abstracts – next couple weeks



Emerging Technologies Information Sessions

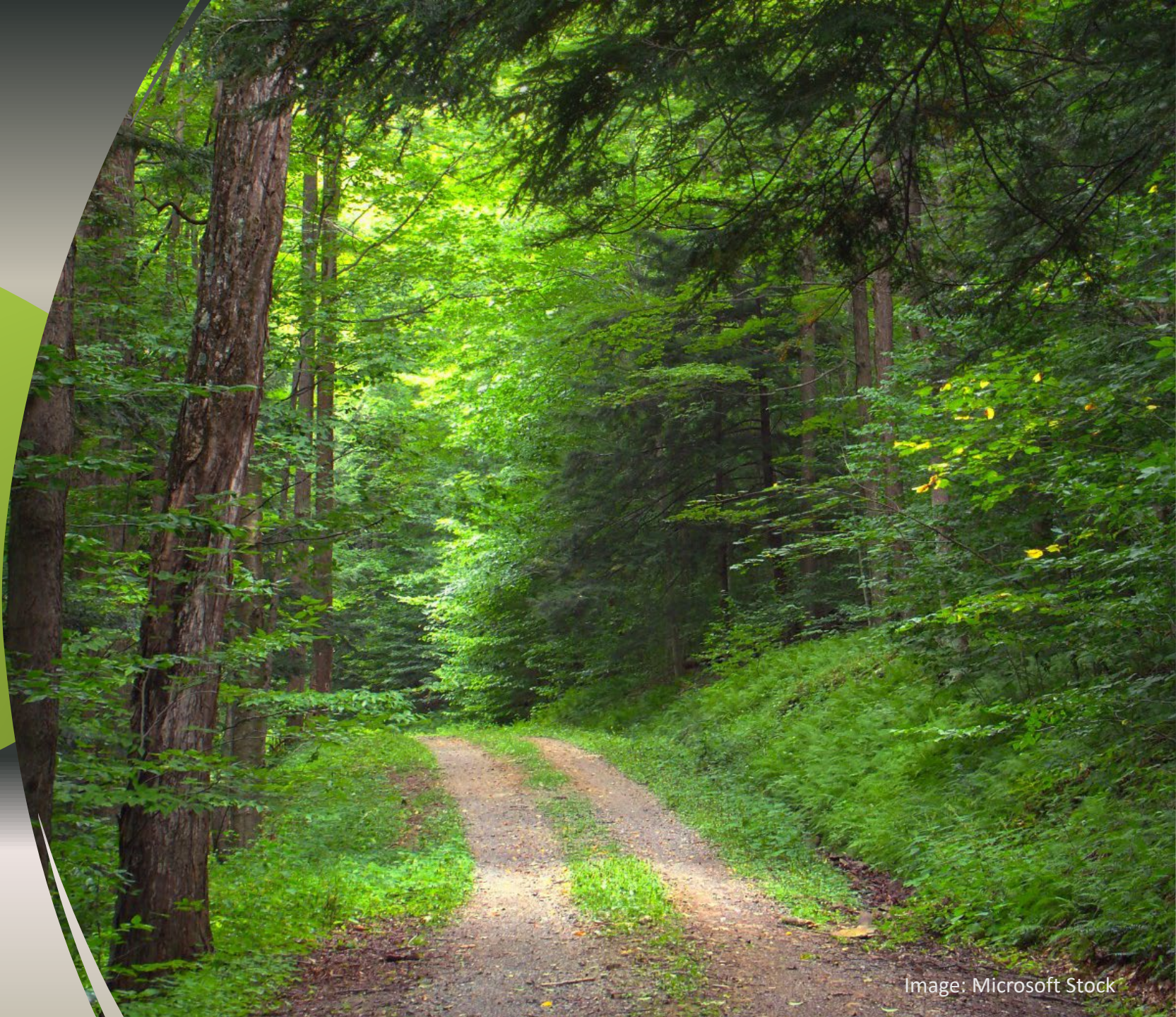
October 26-28, 2026

Skamania Lodge - Stevenson, Washington



Day 1 - Wrap Up

ADJOURN
Tune in
tomorrow at
9 am (PST)





StreamNet

Steering Committee Meeting March 4-5, 2026

Pacific States Marine Fisheries Commission
6720 S Macadam Ave Suite 200
Portland, OR 97219

Microsoft Teams [Need help?](#)

[Join the meeting now](#)

Meeting ID: 211 040 821 682 3

Passcode: p6Gj3HA7

Dial in by phone

[+1 207-387-0436,,393723874#](#) United States, Portland

[Find a local number](#)

Phone conference ID: 393 723 874#



Welcome and Introductions

Please use the chat to introduce yourself (name and affiliation)

Please leave web cameras on to facilitate discussion

Please mute yourself when not speaking.

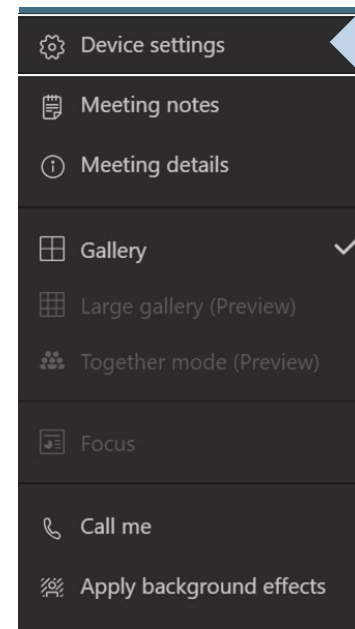
Use *6 to mute phone audio.

Use the microphone icon on the control bar to mute computer audio.



Check device settings

if you are having problems with audio/video



Be Respectful

Be Accountable

Communicate Effectively

Value Differences

Collaborate



Agenda

(times are approximate, PACIFIC TIME ZONE)

DAY 1 - March 4, 2026	
TIME (Approximate)	AGENDA ITEM
1:00 PM PT (2:00 PM MT)	Welcome (Meg Dethloff and Nancy Leonard)
1:15	Spotlight: Columbia Basin Fish and Wildlife Library Update (Tami Wilkerson)
1:35	PNAMP Fish Monitoring Work Group Updates (Meg, Sam Cimino, Mari Williams)
2:15	Break
2:30	PNAMP Monitoring Resources Update (Sam)
2:45	Progress Update StreamNet Tech Team/DDT Teams (Sam)
3:05	Upcoming Conferences (Kasey Bliesner, Meg, Sam)
3:30	Wrap-up and tomorrow's agenda (Nancy)
3:35 PM	Adjourn

DAY 2 - March 5, 2026	
TIME (Approximate)	AGENDA ITEM
9:00 am PT (10:00 AM MT)	Welcome and introductions (Meg Dethloff and Nancy Leonard)
9:10	Spotlight: Montana's Fish Distribution Redevelopment (Dawn Anderson)
9:55	GIS Update (Van Hare)
10:25	Break
10:50	StreamNet Annual Report to BPA (Mari Williams)
11:20	Upcoming Development: eDNA presence/absence, PBT (Lara, Nancy)
11:30	Lunch
1:00 PM	Welcome back (Nancy)
1:05	QA/QC tool 2025 Summary & Discussion (Greg Wilke)
1:35	CAP Strategic Plan implementation and Progress (Mari, Nancy)
2:05	Break
2:20	StreamNet Member Updates (ALL)
3:20	Wrap-up and Next Steps (Meg)
3:30 PM	Adjourn

UPDATE



Montana Fish Distribution Editor Application

Dawn Anderson, Geographic Data Services Bureau Chief

Montana Fish Distribution Editor

Fish & Aquatic Species Distribution Management System

Montana Fish, Wildlife & Parks

March 5, 2026



Presenting today:

- Dawn Anderson – Geographic Data Services Bureau Chief
- Adam Petersen – GIS Programmer Analyst
- Anthony Thompson - GIS Programmer Analyst



Agenda

- Brief background and overview
- Demonstration
- Technical details
- Q &A



Project Objectives

- Replace deprecated JS3 fish distribution application
- Enable biologists to add/edit/remove distribution on lakes and streams for fish and aquatic species, including AIS
- Create fish distribution spatial data for:
 - Internal agency applications/needs
 - Public maps and apps
 - StreamNet exchange
 - Public use



Considerations

- Similar functionality, look and feel
- Addition of “admin screen” to make species and color changes
- Minimal custom code
- Straightforward long-term maintenance



Process Overview

- Gathered high-level requirements
- Determined data structure
- Determined tech stack
- Decide how to break streams into segments
- App development
- Data processing script development
- Documentation, beta testing, bug fixes
- Production release



Application Demo

Editing application is available to internal FWP staff only.

Public distribution viewer is available on the [MT FWP Website](#).



Fish Distribution Editor

[Instructions](#) [Submit Feedback](#)

Select to Edit:

Select Species:
Rainbow Trout × ▾

Select Attribute:
Presence ▾

Select Waterbody in Map View:

Zoom in to map to populate waterbodies list.

Search for lakes/streams/XY

Attribute Categories

- Rainbow Trout: Present (known or presumed)

>>

Front End Tech Stack

ESRI ArcGIS for JavaScript API

- Content Delivery Network (CDN) Web Components version
 - Avoids Node Package Manager (NPM) installation & build process
 - Simple upgrade path

ESRI Calcite Design System

- Web Components-based
- Custom interface elements were easy to build by combining components

No other dependencies and no build system



Data Structure

SPECIES

ATTRIBUTE GROUP

SPP-ATTRIBUTE GROUP CROSS REFERENCE TABLE

Westslope Cutthroat Trout
(WCT)

Presence

Genetics

Genetically Pure, Tested (ID 165)
Genetically Pure, Not Tested
99 – 99.9 % Pure, Tested
99 - 95% Hybridized, Tested

Life History

Fluvial
Spawning and Rearing
Migratory

Origin

Native
NonNative
Reintroduced

SPECIES	ATTRIBUTE	WATERBODY	FROM	TO
WCT	GENETICALLY PURE, TESTED	16516156	0	5
WCT	GENETICALLY PURE, NOT TESTED	16516156	5	8
WCT	GENETICALLY PURE, TESTED	19516777	0	1.1
WCT	99 - 99.9% PURE, TESTED	19846565	1	2.2



Data Structure

SPECIES

ATTRIBUTE GROUP

SPP-ATTRIBUTE GROUP CROSS REFERENCE TABLE

Westslope Cutthroat Trout (WCT)

Presence

Genetics

Genetically Pure, Tested (ID 165)
Genetically Pure, Not Tested
99 – 99.9 % Pure, Tested
99 - 95% Hybridized, Tested

Life History

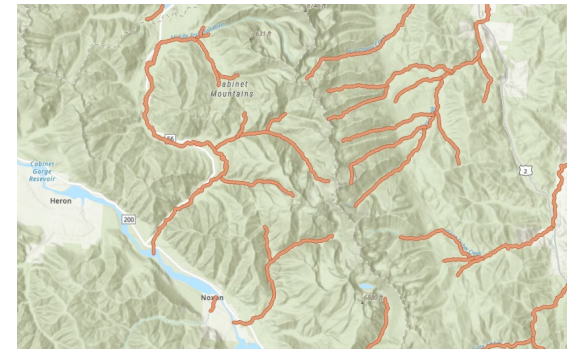
Fluvial
Spawning and Rearing
Migratory

Origin

Native
NonNative
Reintroduced

SPECIES	ATTRIBUTE	WATERBODY	FROM	TO
WCT	GENETICALLY PURE, TESTED	16516156	0	5
WCT	GENETICALLY PURE, NOT TESTED	16516156	5	8
WCT	GENETICALLY PURE, TESTED	19516777	0	1.1
WCT	99 - 99.9% PURE, TESTED	19846565	1	2.2

TABLE RECORDS RELATE TO SPATIAL DATA SEGMENTS ON HYDRO (LAKES AND STREAMS)

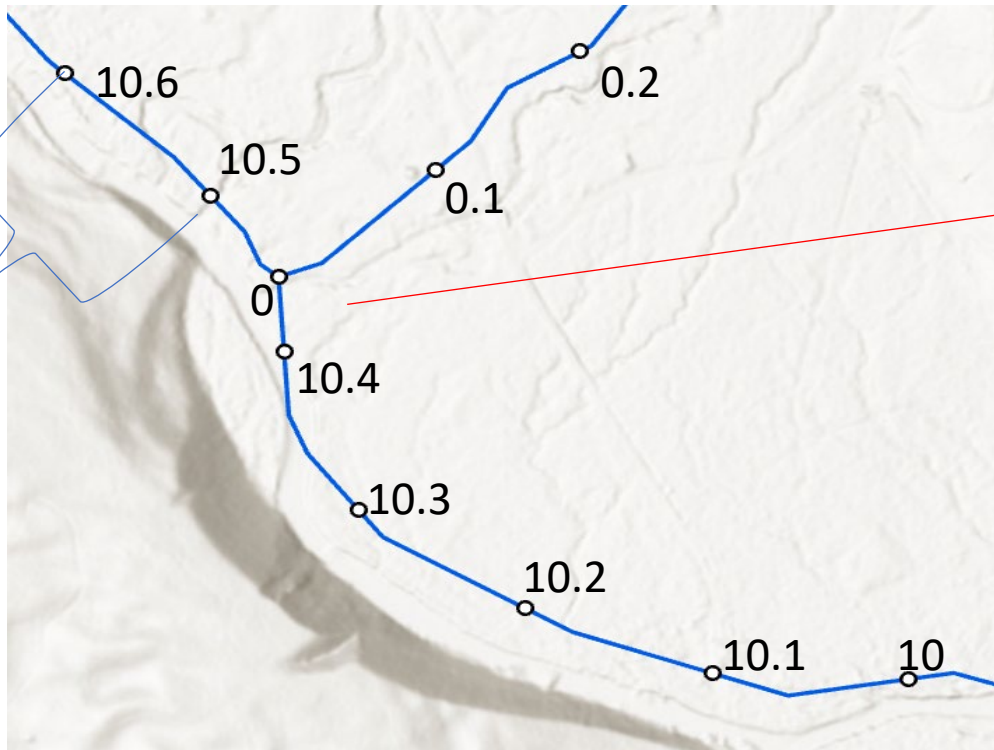


Data Structure

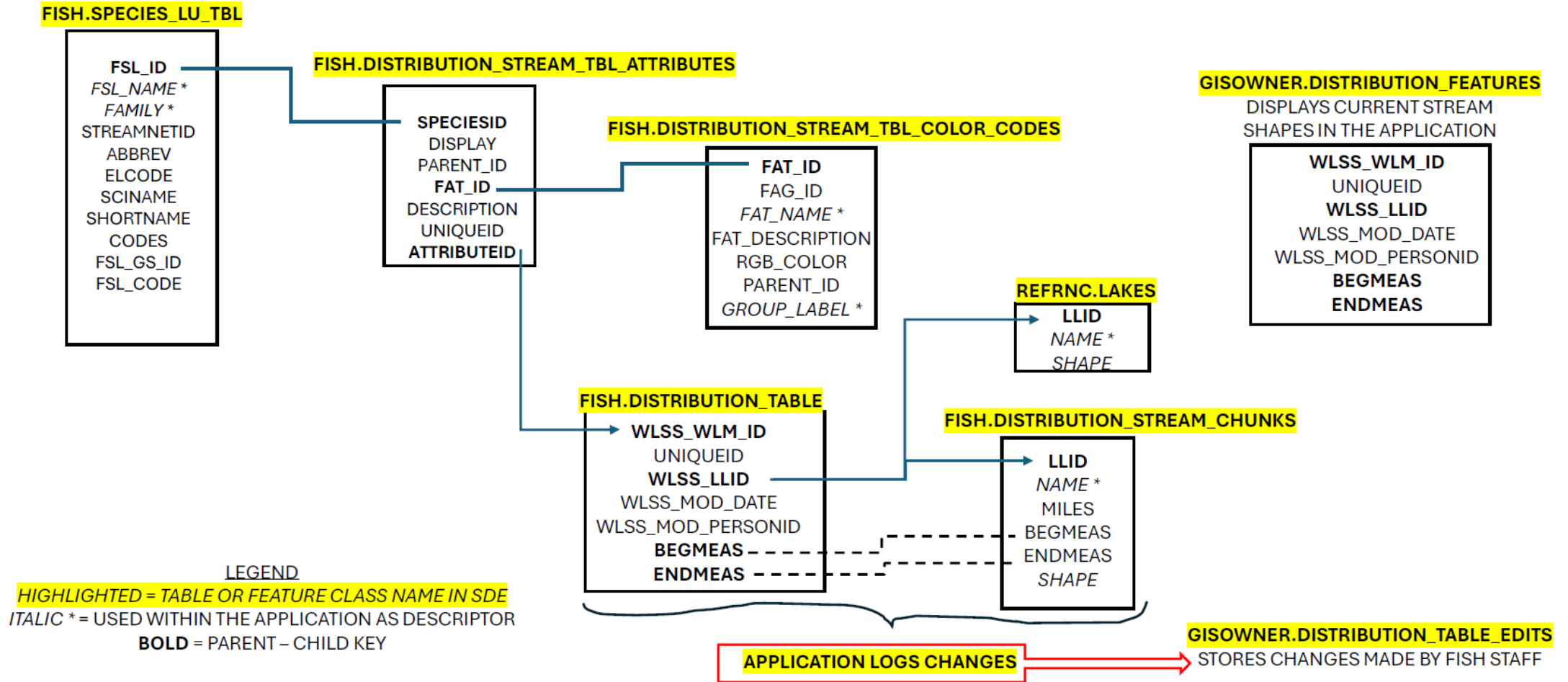
SPECIES	ATTRIBUTE	WATERBODY	FROM	TO
WCT	GENETICALLY PURE, TESTED	16516156	0	5
WCT	GENETICALLY PURE, NOT TESTED	16516156	5	8
WCT	GENETICALLY PURE, TESTED	19516777	0	1.1
WCT	99 - 99.9% PURE, TESTED	19846565	1	2.2

TABLE RECORDS RELATE TO SPATIAL DATA SEGMENTS ON HYDRO (STREAMS) TO DISPLAY DISTRIBUTION

Tenth mile stream segment



Fisheries Distribution Editor Entity Relationship Diagram



Workflow Overview

GISOWNER.DISTRIBUTION_TABLE_EDITS

STORES CHANGES MADE BY FISH STAFF

WLSS_WLM_ID
UNIQUEID
WLSS_LLID
WLSS_MOD_DATE
WLSS_MOD_PERSONID
BEGMEAS
ENDMEAS

fish_UpdateFishDistribution_distributionFeatures.py

C:\dsCode\python\scheduledTasks\scheduled_tasks
JENKINS TASK RUNS EVERY NIGHT – PICKS UP ANY CHANGES

GISOWNER.DISTRIBUTION_FEATURES

DISPLAYS CURRENT DATA IN THE APPLICATION

WLSS_WLM_ID
UNIQUEID
WLSS_LLID
WLSS_MOD_DATE
WLSS_MOD_PERSONID
BEGMEAS
ENDMEAS

fish_UpdateFishDistribution_distributableLayer.py

FISH.DISTRIBUTION_PRESENCE_GENERAL

FISH.DISTRIBUTION_ATTRIBUTES

- GENETICS
- NATIVE/NONNATIVE
- ABUNDANCE

THESE LAYERS AND TABLES ARE AVAILABLE TO THE
PUBLIC ON OUR HUB SITE

FISH.DISTRIBUTION_TABLE

WLSS_WLM_ID
UNIQUEID
WLSS_LLID
WLSS_MOD_DATE
WLSS_MOD_PERSONID
BEGMEAS
ENDMEAS

LEGEND

HIGHLIGHTED = TABLE OR FEATURE CLASS NAME IN AGSPRD

*ITALIC * = USED WITHIN THE APPLICATION AS DESCRIPTOR*

BOLD = PARENT – CHILD KEY

Python script and process



Workflow Overview

Biologists Edit Data

Changes Stored in Oracle Table Records

Python Script Evaluates table for changes (nightly)

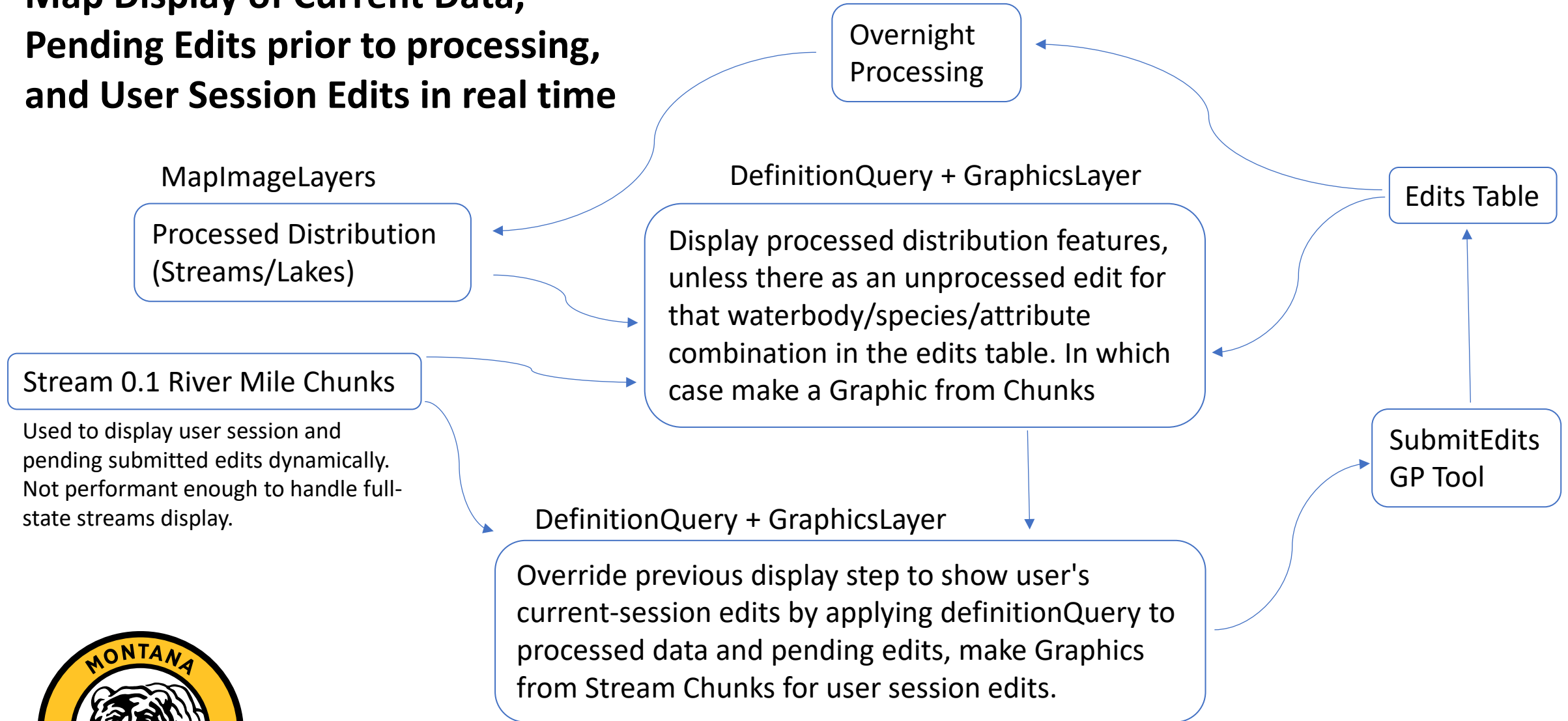
Script edits associated records in master table

Script pushes changes to a feature class for display in application

Script edits production GIS layers for various uses



Map Display of Current Data, Pending Edits prior to processing, and User Session Edits in real time



Products

- Tabular data
- GIS layers
- Mapping applications
 - Public mapping application – display real time edits



Q & A





PSMFC GIS Center Updates

Van Hare

GIS Updates

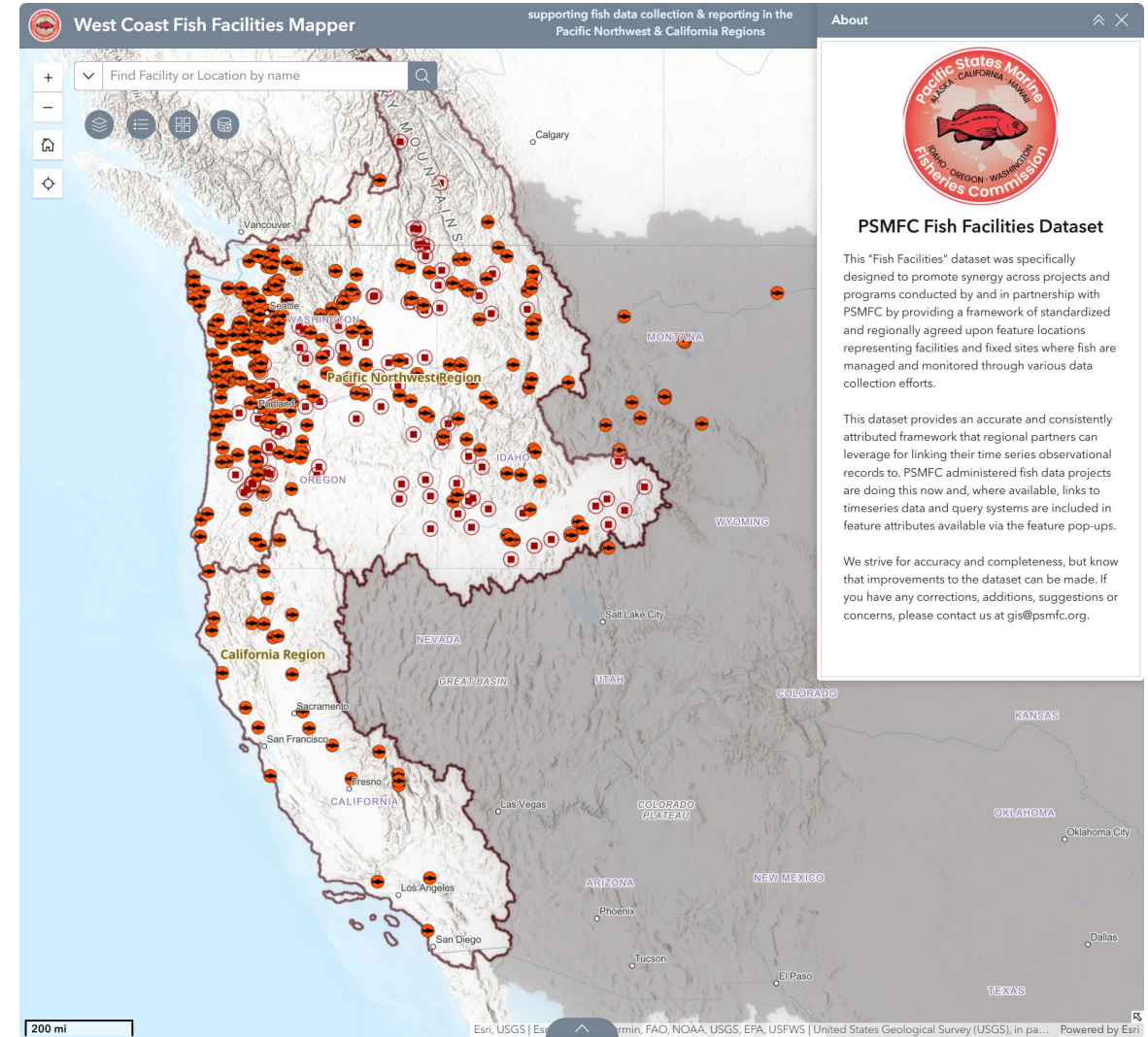
- Fish Facilities data updates
 - ODFW Hatchery facilities submission
 - Expands coverage: 54 facilities added to prior version of the regional dataset
 - Clarifies attributes: 31 facilities already in the prior regional dataset ([HatchID] in SN database), added [Alternative Name] to record ODFW values where Names differed slightly.
 - Review phase before going live to address slight location differences between PSMFC and ODFW.
 - PTAGIS Sites
 - Managing PTAGIS Sites in web maps as separately published layers
 - Better track PTAGIS changes/additions and site status (active/decommissioned)
 - Allows display of all PTAGIS site types alongside other Fish Facilities, including those that are not technically 'facilities'



GIS Updates

New West Coast Fish Facilities Mapper – Coming soon

- Seeking feedback internally before going live via StreamNet and other PSMFC program websites
- Expanding extent to include the Pacific Northwest and California Regions, including improved coverage in British Columbia
- Intend to use the re-designed application as a template (layout, configuration of widgets, etc.) for replacing the StreamNet Mapper and Protected Areas Mapper



GIS Updates

Fish Distribution updates

- Updates from IDFG that will be included in the next release (Bonneville & Yellowstone Cutthroat Trout)
- Calling for updates now with plans to release a new Regional Fish Distribution dataset this spring. Updates will incorporate compatible data from the [CalFish](#) project and readily available updates from ODFW and WDFW.
- Aware of noteworthy updates to distributions in the Klamath River Basin
- As a pilot – will incorporate 'historical' distribution data where it is available. [UseType] = historical
- Priority species to be updated include:
 - Fall Chinook (Klamath Basin*)
 - Pacific Lamprey (in partnership with Pacific Lamprey Conservation Initiative)





BREAK

Return @ 10:50

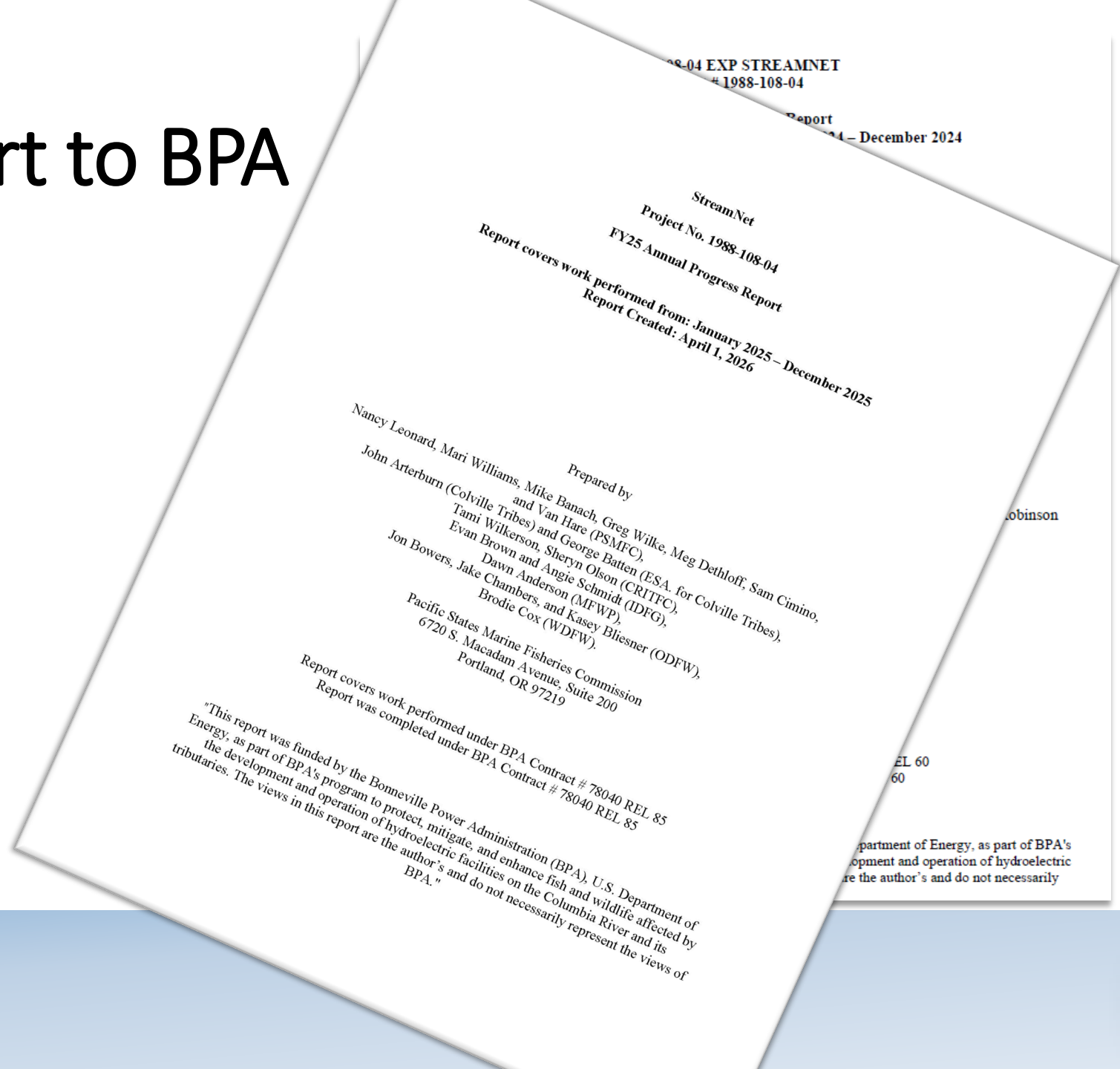
StreamNet Annual Report to BPA

Mari Williams and Nancy Leonard



Annual Report to BPA

[SharePoint Folder](#)



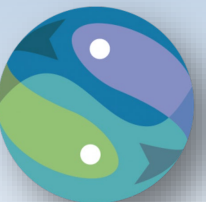
Lessons Learned

- Communicating the **quality of submitted data** provides data consumers with confidence in their use of these data.
- StreamNet improving and maintaining **data access** for audiences with varied technical knowledge and infrastructure increases the value and use of these data for the public and better informs decisions.
- Engaging **special work groups** and FMWG task teams with the required expertise to inform new data categories while coordinating with PNAMP staff is efficient and effective.
- Proper **documentation** for data integrity is critical to ensure that these valuable data, funded by the public and ratepayers, remain accessible to inform critical uncertainties and decisions into the future.
- **Succession planning and recruitment** of new partners and members that require documenting and publicly communicating information about StreamNet Program and its processes. Succession planning also requires partner agencies and tribes to document new and existing processes used in data management to ensure smooth staff transition.



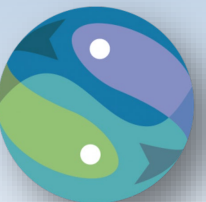
Recommendations

- Support regional data stewardship
- Connect regional data systems
- Enhance and maintain StreamNet as Exchange of Record for BPA and others
- Support increased discoverability and outreach
- Support a broader group of data categories to support regional information needs
- Support expanding data flow for resident and anadromous fish



Support Regional Data Stewardship

- Financially support data stewards throughout the Columbia River Basin, especially for tribal partners currently without data stewards. Staff positions fulfilling tasks related to data stewards, such as data coordinators, data analysts, data specialists, GIS technicians, software developers, API software programmer/analyst, database administrators, data managers, and project analysts should have time funded to perform work that is required to fulfill contract terms. This funding should complement, and not reduce, existing funding provided through individual projects and or through data management projects including the CRITFC ITMD (2008-507-00) project that partially supports data stewards, and the Intermountain Province / Pend Oreille Subbasin Data Management Project (2011-020-00).
- Support and facilitate the development and maintenance of the data-providing partners' information systems and infrastructure that support data flow with StreamNet.
- The Executive Committee should continue to encourage and invite other data providers, including CRITFC member tribes, NWIFC member tribes, SBT, and other tribes or agencies to participate in and/or become members on both the Executive Committee and Steering Committee. Based on past discussions, funding may be required to secure the participation of tribes in StreamNet and CAP.
- Support StreamNet partner participation in PNAMP Fish Monitoring Work Group (FMWG)/StreamNet joint task groups to ensure proper representation by state and tribal natural resources experts to work on tasks that contribute to improving or expanding data managed by StreamNet.
- Continue discussions with NOAA about contributing to StreamNet's annual budget to maintain current support for their data needs and explore further enhancement to better address their West Coast Region information needs.



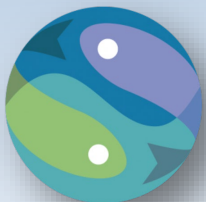
Connect Regional Data Systems

- Support StreamNet and the PSMFC GIS Center to develop geographical connectivity to internal and external data systems for resident and anadromous, hatchery and natural origin fish groupings, fish facilities, as well as water quality and habitat data.
- Encourage partners to develop and improve documentation of their spatial data submitted to StreamNet, including fish distributions, trend features, and fish facilities.
- Support StreamNet in developing connections through queries or other automation between existing fish related data systems within PSMFC, such as PTAGIS and RMIS, and external systems, such as Monitoring Resources and CBFish.
- Support data providers in assessing the potential benefits of connecting records across internal systems to facilitate submitting consistent, quality data to StreamNet and other data systems.
- Develop and evaluate data consumer information to look for connections in data needs across systems and whether it would be beneficial to facilitate data access by aligning overlapping fields and terms (e.g., fish management unit names).
- Facilitate discussions among BPA, NPCC, NOAA, and USFWS to develop, discover, and support efforts by StreamNet and PNAMP to secure additional funding opportunities to support tasks focused on regional data connectivity.



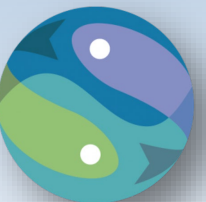
Enhance and Maintain StreamNet as Exchange of Record for BPA and NPCC

- Support participation, either by providing in-kind or BPA funding, by all data providers and data consumers in discussions to refine or develop new data categories and exchange standards in PNAMP FMWG/StreamNet task groups to address issues that require input from a broader group of experts including biologists, fisheries managers, and CBF&W librarian.
- Support continued application and development of the CAP Fish HLIs (CAX) StreamNet Quality Assurance Quality Control Plan for StreamNet funded partners by providing BPA funding for this task.
- Advance implementation of improved metadata documentation within agencies' and tribes' data systems, especially for data of regional importance.
- Support continued funding of PNAMP's Monitoring Resources and continued partner engagement and collaboration with Monitoring Resources as a resource to improve data documentation.
- Support continued funding of CRITFC's CBFW Library and continued partner engagement and collaboration with Library staff on archival storage and citation of supporting literature.
- Recommend that NPCC officially recognizes PSMFC StreamNet GIS as the System of Record and the StreamNet database systems (CAX and Fish Monitoring Data) as the System of Data Exchange for the Council's Fish and Wildlife Program.



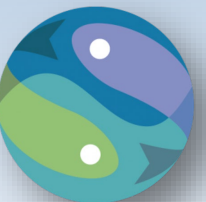
Support Increased Discoverability and Outreach

- Encourage compliance with the Data Use Agreements citation and attribution requirements by citing StreamNet and CAP data exchange as the System of Data Exchange for reporting and publications. Identifying where data used was accessed from improves discoverability, as well as reproducibility and transparency.
- Leverage regional connectivity of external data systems to StreamNet to increase discoverability by providing linkage and connectivity information on multiple platforms and repositories of data systems such as DataOne and GitHub.
- Support StreamNet and CAP co-leads in outreach and discoverability efforts to expand the awareness, understanding, and usage of existing data systems through workshops, presentations, and development of informational materials.
- Support educational opportunities for data consumers to properly comply with the StreamNet and CAP Data Use Agreements through citation and attribution.
- Advance implementation of improved metadata documentation within agencies' and tribes' data systems, especially for data of regional importance. Leverage PNAMP's Monitoring Resources and CRITFC's CBFW Library.
- Support participation, either by providing in-kind or BPA funding, in PNAMP outreach and subject matter expert programming, including the FMWG. These opportunities foster engagement and collaboration in areas outside of StreamNet, providing opportunities for StreamNet staff and funded partners to both represent StreamNet and to discover data system connections.



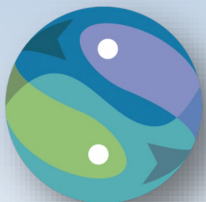
Support a Broader Group of Data Categories to Support Regional Information Needs

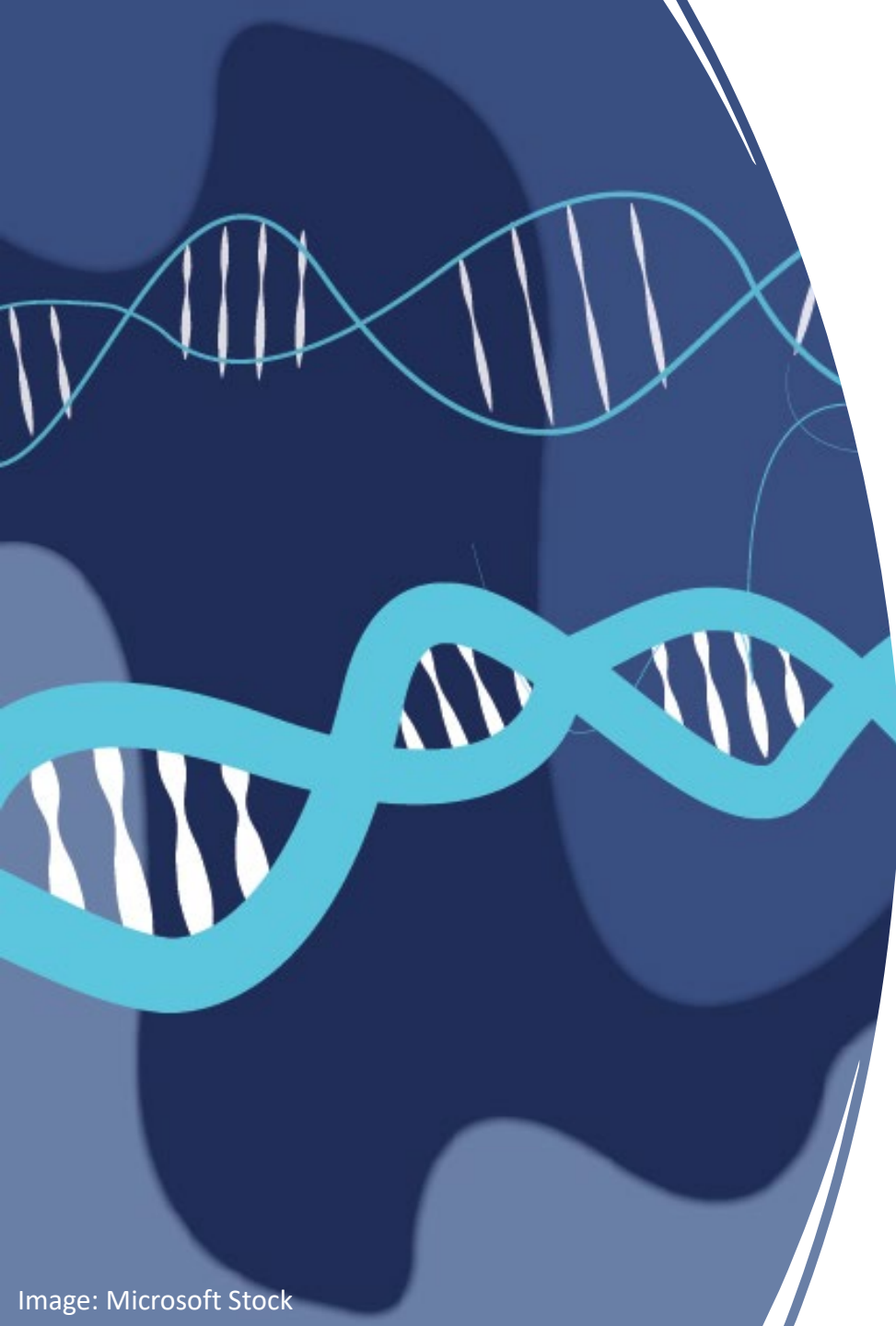
- Confirm with StreamNet partners the status of new tasks, to ensure these are completed before deciding to add on new tasks. Work with the StreamNet technical committees to ensure that tasks are being completed.
- Support expanding data flow for resident and anadromous fish from agency/tribal data systems to StreamNet data systems that contribute to informing the NPCC 2020 Addendum (goals, objectives, and indicators); and BPA and USFWS bull trout and sturgeon data needs.
- Support StreamNet in identifying datasets not currently available to support regional management decisions by expanding data flow, public data access, and long-term data management.
- Support implementation of the Coordinated Assessments Partnership Strategic Plan by strongly encouraging BPA, NPCC and USFWS to build on StreamNet/CAP successes for improving access to fish and related habitat and water quality data and data system connections.



Annual Report to BPA CY2025

Due Date	Item
Done	Document shared to SN SC members and external partners
Mostly Done	Input from SN SC members on 1st draft
Feb 18	2nd draft report sent to SN SC members
Now!	SN SC meeting (3/5/26) review of current timeline
March 18	Final input from SN SC member due
April 1	Final report submitted to BPA and sent to SN SC members





2026-2027

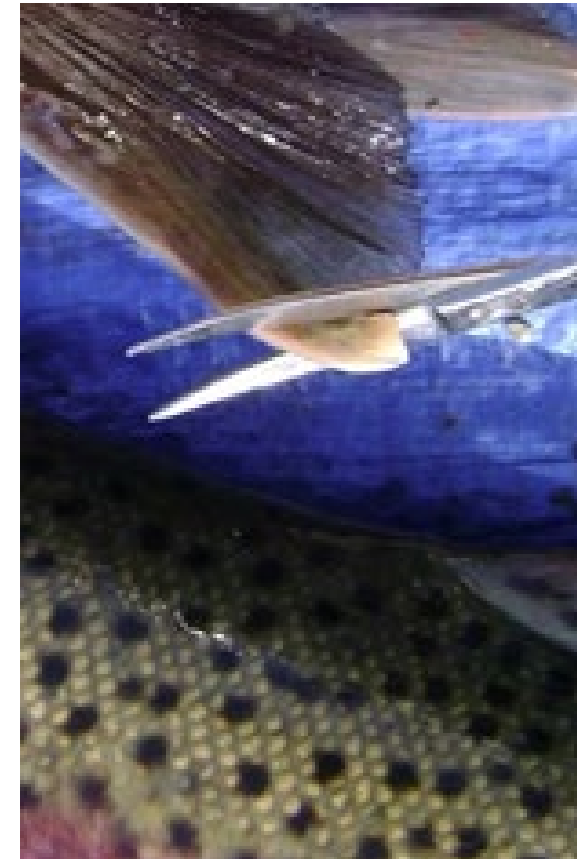
Preliminary Scoping Of
Two New Genetics Data
Categories For
PSMFC Data System

Parentage Based Genetic Tagging (PBT) &
Genetic Stock Identification (GSI)

Environmental DNA (eDNA)

Scoping Genetic Data Elements for Improved Regional Access

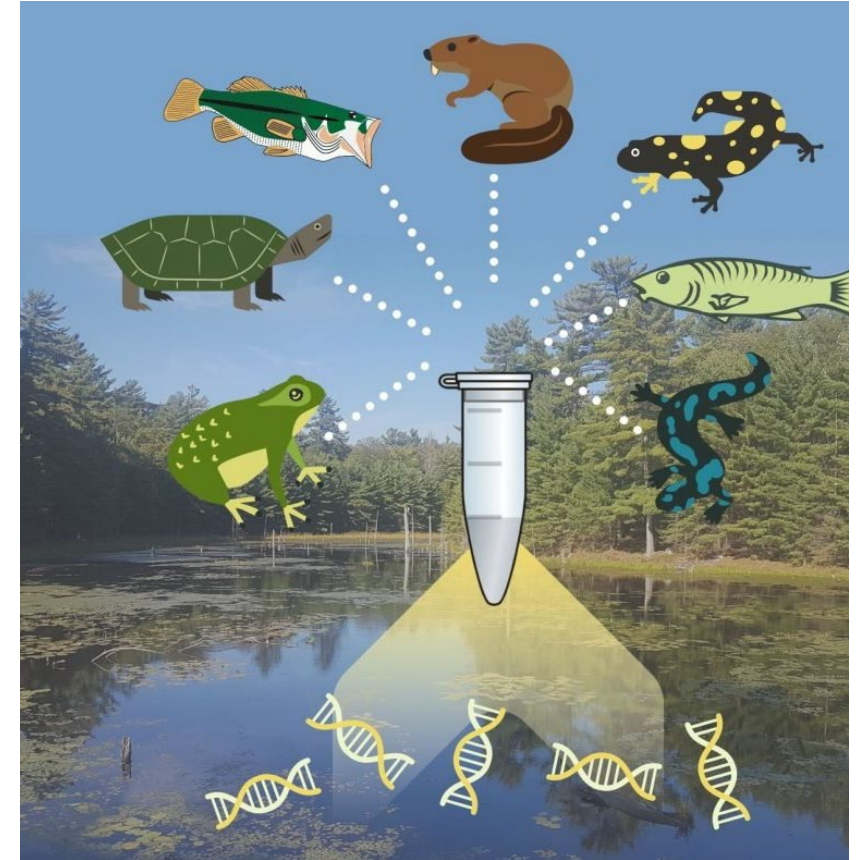
- Funded by internal PSMFC IJFA-commission funds
- **Scoping exercise** - Builds upon RMPC Regional Committee on Marking and Tagging meetings discussing sharing PBT and GSI data as part of CWT RMIS
 - **Task:** focused on identifying which genetic fields could be added to the RMPC RMIS data system to enhance access to genetic data.
 - **Process:** PNAMP FMWG to convene virtually and up to 2 in-person meeting at IDFG or PSMFC
 - **Participants:** CWT and genetics data providers and consumers, RCMT members, StreamNet members, NOAA researchers, CRITFC Hagerman Genetics Laboratory, IDFG Eagle Fish Genetics lab, FishGen (baseline) staff, and other interested researchers, managers and funders, who have indicated interest in making data regionally accessible for analysis
- Tentative deliverables:
 - Controlled Vocabulary of genetics data elements
 - Initial conceptual illustration of relationship among fields



CRITFC 2017 presentation

Scoping eDNA for Improved Regional Access & Explore Use for Presence-Absence Visualization

- Funded by internal PSMFC IJFA-commission funds and BPA
- **Scoping exercise** - Builds upon interest from managers who are collecting eDNA to have a regional location to exchange these data
 - **Task:** focused on identifying how these data could be exchanged and how these could inform a visualization of presence/absence over time
 - **Process:** will be including PNAMP FMWG to convene virtually
 - **Participants:** any interested eDNA data providers and consumers funded by BPA or others to collect these data
- Tentative deliverables:
 - Controlled Vocabulary of eDNA data elements
 - Initial conceptual illustration of how to visualize
 - Discussing caveats and concerns of using these data for presence/absence



<https://stateofthebay.ca/edna-learning-from-the-molecule-thats-always-left-behind/>

In case you missed these eDNA opportunities

SAVE THE DATE

2026 Global eDNA Conference

**OCTOBER
28-30**



Mark your calendars —
October 28-30, 2026
Seattle, Washington, USA



2026 Global eDNA Conference Support Microgrant Opportunity


Award Type: eDNA Collaborative Microgrant
Submission Deadline: 31 March 2026
Anticipated Number of Awards: up to 10
Program Contact: Shana Hirsch (shirsch@uw.edu)

Hosted in partnership with the [MTS eDNA Committee](#) and the [University of Washington's eDNA Collaborative](#),
Abstract Deadline: May 29, 2026

<https://www.mtsociety.org/global-edna-conference>

A top-down view of a dining table with various dishes. On the right, a large pizza with pepperoni and basil sits on a wooden cutting board. In the center, a colorful salad is served in a blue and white star-patterned bowl. To the left, a plate of fried items, possibly chicken or fish, is accompanied by a bowl of sauce. Other dishes include a plate of flatbread with herbs and a bowl of soup. The table is set with white plates, silverware, and glasses. A red, white, and blue striped tablecloth is visible under the dishes.

LUNCH - Return
@ 1:00 pm



Welcome
back



QA/QC tool 2025 Summary & Discussion

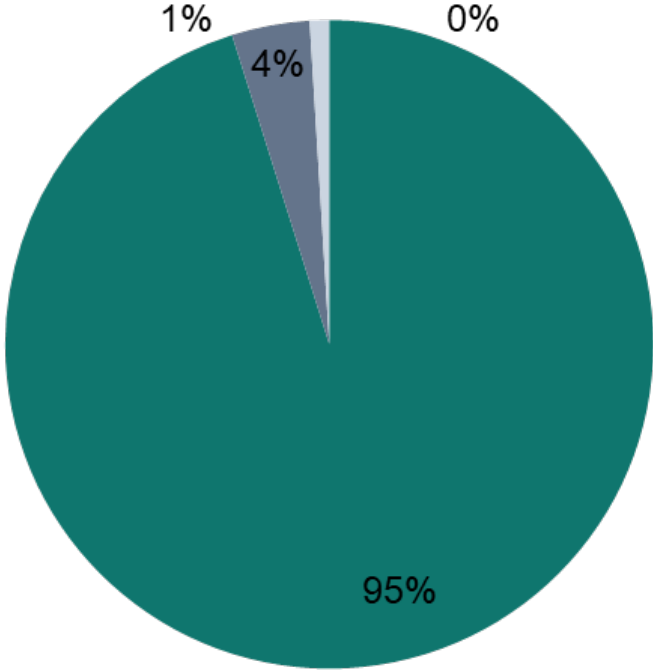
Greg Wilke

Round 3 Data Error Analysis

Internal Agency Review | 164 Records Reviewed

KEY FINDING
95%
of errors were URL issues

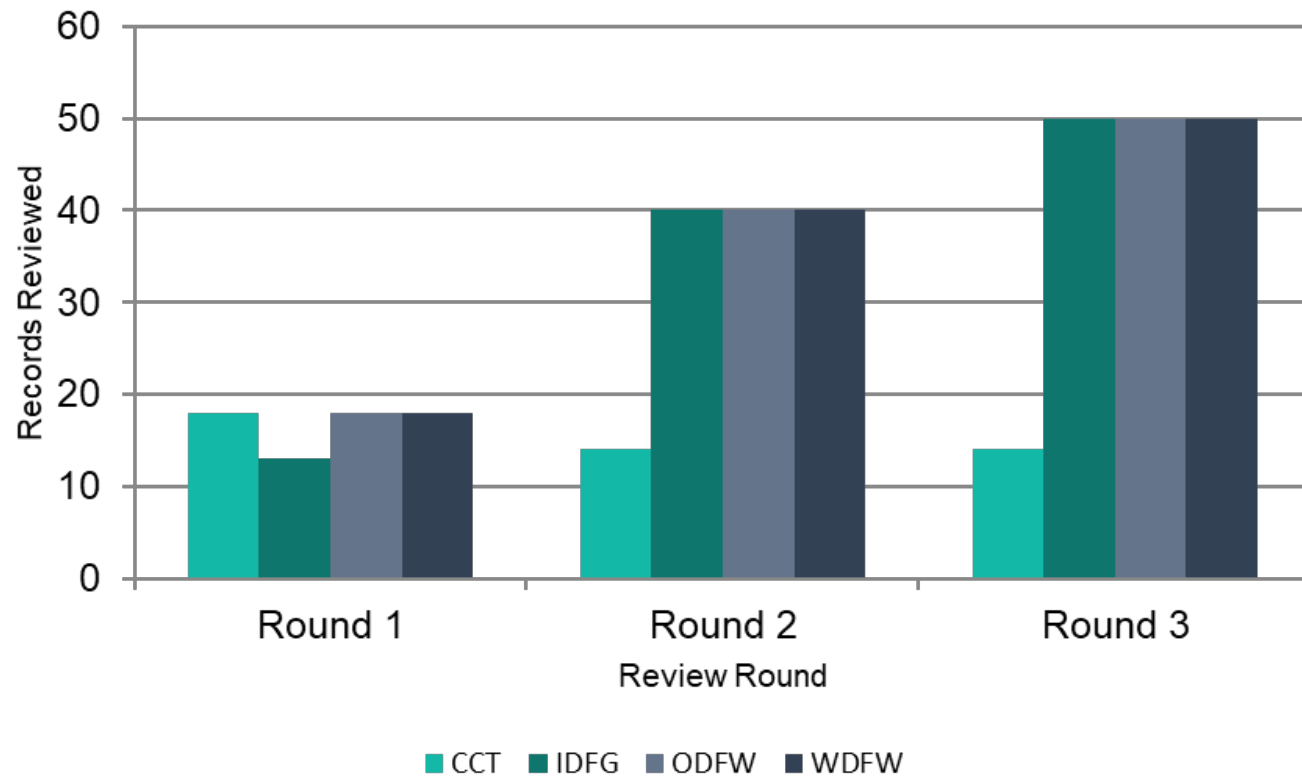
TOTAL ERRORS FOUND
103
across 164 records



■ URL Errors ■ Data Errors ■ Display Errors ■ Metrics Errors

Review Progress Across Rounds

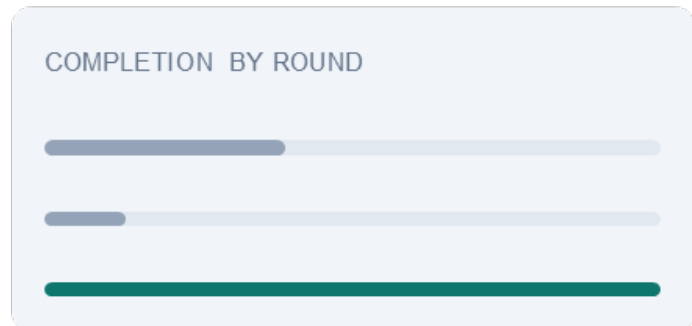
Three Rounds of QAQC Review | 365 Total Records



ROUND 3 ACHIEVEMENT

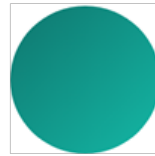
100%

Dual-review completion



URL Data Review Initiative

New Process to Address Identified Data Quality Issues



Initiating Automated URL Validation

Based on Round 3 findings showing URL errors account for 98% of all data issues, we will implement an automated URL review process to systematically identify broken links and suspect URLs across the HLI database.



Broken Link Detection

Automated scanning for 404s and dead links



Suspect URL Flagging

Pattern analysis to identify problematic URLs



Agency Reporting

Results delivered to each agency for correction

Round 4 Planning: 2026

Expanded Scope and Improved Selection Process

NEW FOR ROUND 4

Hatchery HLI Inclusion

Hatchery high-level indicators will be included in the QAQC review for the first time.

IMPROVED PROCESS

Coverage-Weighted Selection

Automated selection will prioritize population IDs with the least review coverage.

TARGET YEAR

2026

Fourth round of review

Planned Approach

- ~50 records per agency
- Coverage-weighted selection
- Include hatchery HLI data
- Internal agency review

Hatchery HLI Query Tool

- **Cross-Project Design Team Led by Jason Edwards (RecFIN) and Including Mari, Mike, and Megan Griffiths**
- **Tested New Meet, Plan, Design, Build Cycles with Project Lead + Domain Experts**
- **Broodstock Spawning, Hatchery Returns, Hatchery Releases, Hatchery SAR, Full Data Downloading**
- **Internal Review: Now**
- **External Review: Soon**

HCAx HLI Query

About CAP Fish HPMs

The Coordinated Assessments Data Exchange (CAX) houses data specific to hatchery and natural origin salmon and steelhead abundance and productivity, as collected and compiled by states, tribes, federal agencies, and contracted organizations.

This CAX query interface is designed to provide access to the Hatchery Coordinated Assessments (HCA) datasets available to assess hatchery origin fish data through standard metrics and estimates organized by Hatchery Programs and Stocks. The current Data Exchange Standards for HCA include broodstock spawning, hatchery releases, hatchery returns, and hatchery smolt to adult returns.

See the current CA HPM and Metrics page for more information.

Use of any CAP HPM data falls under the [Data Policy and Agreements](#).

Filter Options

Download Current tab: Broodstock Spawning Clear All Filters

Universal Filters Clear Universal Selection(s)

Hatchery Facility HUC Name

Filter available... Search Clear

Available Selected

Clackamas River
Columbia River
Columbia River
Columbia River
Columbia River
Deschutes River
Dungeness-Elwt
Duwamish River
Grays Harbor R

Cowlitz River (m)

HPM Data Sets

Broodstock Spawning Hatchery Returns Hatchery Releases Hatchery SAR

<< 1 2 3 4 5 Next >> Rows per page: 25 50 100 Show All Columns

#	Brood Year	Brood Females	Brood Males	Brood Jacks	Brood Total	HOB Females	HOB Males
1	2010	1144	1105	19	2268	1002	
2	2011	1075	1008	31	2114	1075	
3	2012	376	362	14	752	376	
4	2013	885	865	21	1771	877	
5	2014	886	866	21	1773	880	
6	2015	930	913	17	1860	911	
7	2016	881	866	15	1762	871	
8	2017	1015	978	36	2029	845	

Filters Applied

UNIVERSAL

- Hatchery Facility HUC Name: Cowlitz River (mouth - Cispus) & tribs

HPM

- BROODSTOCK SPAWNING**
- (NONE)
- HATCHERY RETURNS**
- (NONE)
- HATCHERY RELEASES**
- (NONE)
- HATCHERY SAR**
- (NONE)

Coordinated Assessments Partnership Strategic Plan

Mari Williams and Nancy Leonard



StreamNet

Milestones

Data Flow Coordination Established

- Convene the StreamNet Technical Team and CA DDTs at least twice a year to review and compile data flow updates.

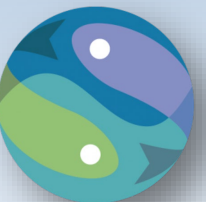
DES Maintained and Expanded

- StreamNet Technical Team and CA DDTs review twice a year the data exchange between providers and the CAX system

Note: for this milestone, progress update to the StreamNet Executive Committee during their annual meeting is limited to challenges/obstacles identified by the Steering Committee. If no concern has been identified, no annual update is provided.

January 13, 2026

July 2026



Milestones

Infrastructure and Operations Secured, Sustained, and Enhanced

- Provide training and documentation to data providers and users to sustain regional data exchange operations.
- The StreamNet Technical Team will review infrastructure and operational needs, successes, and failures twice annually. These meetings include the Columbia Basin Fish & Wildlife Library and PSMFC GIS Program that support CA and StreamNet operations.
- The StreamNet Technical Team and CA DDT will identify opportunities to reduce manual effort and improve security and automation.
- Enhance data flow reliability within a partner's internal data management and flow processes with the CAX.
- Summarize technological advancements, their implementation, and associated resources annually.

January 13, 2026 July 2026 Annual Report to BPA

Note: for this milestone, progress update to the StreamNet Executive Committee during their annual meeting is limited to challenges/obstacles identified by the Steering Committee. If no concern has been identified, no annual update is provided.



Milestones

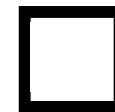
Data are communicated accurately and understood by participating systems

- Review operation and usage of the StreamNet REST API by the StreamNet Technical Team, StreamNet DDT and CA DDT during joint meetings.
- Track integration efforts and document barriers to inform future improvements.

Note: for this milestone, progress update to the StreamNet Executive Committee during their annual meeting is limited to challenges/obstacles identified by the Steering Committee. If no concern has been identified, no annual update is provided.



January 13, 2026



July 2026



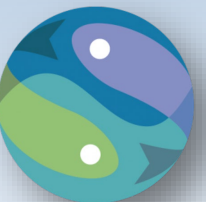
Milestones

Public Data Are Secured and Accessible

- Track usage statistics, citations, and stakeholder feedback to evaluate return on investment and inform improvements to these tools.
- The CAP Core Team will develop and maintain a prioritized list of datasets to be preserved by 2030.
- Develop citation guidelines for CAP data sets by 2030 and FAIR/CARE principles are implemented as feasible.

Note: for this milestone, progress update to the StreamNet Executive Committee during their annual meeting is limited to challenges/obstacles identified by the Steering Committee. If no concern has been identified, no annual update is provided.

Annual Report to BPA



Milestones

CAP Aligns with Pacific Northwest Needs

- Annual review of the CAP Strategic Plan by the StreamNet Executive Committee meeting, will consider staff summary of:
 - Team meetings, action items, and progress towards completing tasks or realizing deliverables.
 - Data flow maintenance, improvements, or problems encountered including updated record counts in the CAX and QA/QC results.
 - Existing data exchange categories and capacity for new data categories to align with regional priorities.
- Conduct regular survey of partners for identification of needs, at least once prior to each CAP workshop.

Annual Report to BPA



Milestones

Tribal Engagement Strengthened

- Conduct annual reviews to track engagement (meeting attendance, data exchanged, requests), identify challenges, and inform improvements.
- Annually review training opportunities and needs to resolve identified challenges within CAP as it relates to Tribal engagement.
- Review direct support opportunities for staff and infrastructure funding to promote equitable engagement in CAP.

Annual Report to BPA



Milestones

Sustainable Knowledge Sharing

- Establish and maintain a shared best practices, solutions, and tools library or repository by 2030.
- Track annual training and resources taken, developed, or shared, including workshops, videos, documents, repository of shared best management practices, software applications, code, and scripts.

Annual Report to BPA



Milestones

CAP Visibility Enhanced

- Track conference participation and engagements.
- Document and summarize the PNAMP, StreamNet, and other CAP partners' outreach activities related to CAP.
- Maintain and update the CAP information on the StreamNet and PNAMP websites as necessary. Summarize Website usage statistics to inform improvements.
- Publish a CAP article in the PNAMP newsletter, at least annually.
- Annually assess changes in participants (individuals and entities) based on retention and recruitment in CAP related committees, teams, workshops, and FMWG task groups.



March PNAMP Newsletter



Annual Report to BPA

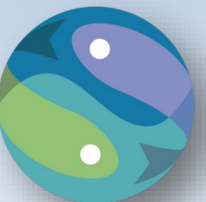


Milestones

Partnership Coordinated

- The CAP Core Team reviews meeting documentation annually to assess participation accessibility to all partners.
- List of point of contacts is established and identified on accessible materials by 2030.
- Annually review feedback and implementation results.

Annual Report to BPA

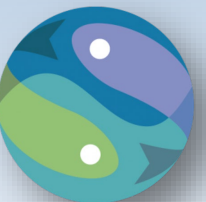


Milestones

CAP Data Are Referenced with Persistent Identifiers

- Maintain a version registry to support reusability of CAP data used in data tools and reports.
- Establish an internal persistent DOI for datasets to aid traceability and provenance by 2030.
- Annually track website usage metrics for CAP pages and CAP queries.

Annual Report to BPA





BREAK
Return
@ 2:20



Member Updates and Announcements

MFWP: Dawn Anderson

IDFG: Angie Schmidt, Evan Brown

CRITFC Library: Tami Wilkerson

CRITFC:

USFWS: Todd Gilmore

Shoshone-Bannock Tribes: Kurt Tardy

ODFW: Jake Chambers

Colville Tribes: George Batten

WDFW: Brodie Cox

NOAA: Katie Barnas

NPCC: Kris Homel


BPA: Brady Allen, Russell Scranton

PNAMP-PSMFC: Meg, Sam, Mari, Nancy

SDM/BECI-PSMFC: Lara Erikson, Mari

StreamNet-PSMFC: Nancy, Greg, Mike, Mari, Megan,
Sam, Meg D, Van Hare

Please email mwilliams@psmfc.org with any information you'd like included in the meeting notes



**Next StreamNet
Steering Committee
Meeting**

Boise, Idaho

November 4-5, 2026



ADJOURN

Thanks for
joining us!